

Harbinger Boarding Equipment

- Accommodation Ladders (ISO 5488)
- Gangways
- Accessories & spare parts

A Longer Life



MME
MME GROUP

www.mme-group.com

Index

PAGE	CONTENTS
2	About MME Group
3	Safe transfer of crew and passengers in any situation
4	Safe transfer of crew and passengers in any situation
5	Why choose Harbinger boarding equipment?
6	Our other products & systems
7	ACCOMMODATION LADDERS
10	Regular Accommodation ladders
20	Replacement Accommodation Ladders
23	Winches
24	STANDARD GANGWAYS
27	SHALA Gangways
34	SALA Gangways
41	Turntable top platforms
46	Bulwark ladders
50	Shore Gangways
54	Onshore & Offshore Overhead Braced Gangways & Bridges
58	Modular Gangways
63	Naval Brows
66	CUSTOM GANGWAYS
69	Telescopic Gangways & Wind Turbine Access
72	Self-levelling Stepped Gangways (Cruise Access)
76	Pontoon Access Gangways
79	Marine Column & Tower Gangways
83	Other Bespoke products
85	Accessoires & spare parts
86	More accessories
87	More accessories

About MME Group

MME Group is based in the Rotterdam area in the Netherlands. The company was established in 1963 and has since grown to become one of the most experienced and specialized companies in its field of activity. MME Group serves customers around the globe in industries such as machine building, oil & gas, offshore renewable energy (wind and tidal), shipping and shipbuilding.

MME Group activities:

- Cathodic Protection (SA, ICCP)
- MGPS (Impressed Current Anti-Fouling)
- Harbinger Boarding Equipment
- Non-destructive Testing
- Metallurgical Laboratory
- Marine Surveys
- Rope Access
- Playground & Recreational Safety
- NDT Training Courses

Contact us to find out how we can help you realise 'A Longer Life' for your assets or products.

Website: www.mme-group.com

Tel.: +31 (0)180 48 28 28

E-mail: info@mme-group.com

Safe transfer of crew and passengers in any situation

Harbinger is the trade name for MME Group's marine aluminium Boarding Equipment. It comprises a wide range of high quality seawater resistant aluminium gangways, accommodation ladders and other types of access equipment. Besides the standard product range we also manufacture bespoke access equipment.

Accommodation Ladders (ISO 5488)

Harbinger seawater resistant aluminium, fixed curved step accommodation ladders with extruded treads provide a safe walking surface. With inclination angles ranging from 0 to 55 degrees from horizontal, these ladders are suitable for the majority of vessel types. The ladders have solid, lightweight stringers of own design and are fitted with wire guides.



Replacement Accommodation Ladders

When replacing an accommodation ladder, it is not always possible/desirable to purchase it from the original supplier. You want a fast and cost-effective solution to get your vessel sailing again. In that situation, Harbinger replacement accommodation ladders are your best choice.

Scan one of the codes below for a replacement form



For an accommodation ladder with top platform



For an accommodation ladder without top platform

Safe transfer of crew and passengers in any situation



Gangways

Do you need to bridge a one meter gap between the quay and a small vessel? Or do you want to safely connect two offshore platforms across 50+ meters? Harbinger Boarding Equipment is the right solution to create a walkway for safe transfer of crew and passengers across any gap. Our standard systems are suitable for the majority of situations. For unique challenges, we can either modify an existing design, or create a tailor-made solution.



Accessories & Spares

We supply a full scope of accessories and spare parts for accommodation ladders and gangways:

- Safety nets
- Side nets
- Poly rope
- Lifting slings
- Quay rollers
- Stanchions
- Folding handrails
- Fixed handrails
- Turntable top platforms
- Self-stowing gear
- Winches
- Load tests & certification



Why choose Harbinger boarding equipment?

All our access systems are made of marine grade lightweight aluminium. This has several important advantages:

- Lightweight systems (1/3 of the weight of comparable steel structures)
- Low crane capacity needed due to reduced weight
- Seawater resistant aluminium: no coating or galvanizing necessary
- Maintenance free because of a self healing oxide layer
- Manufactured in a DNV-GL recognised ISO 9001:2015 welding shop
- BSMA 78 / ISO 7061 and BSMA 89 / ISO 5488 compliant products
- Wide range of products
- Accessories and replacements are also available

Our other products & systems

Cathodic Protection: Corrosion is one of the largest threats to the long-term integrity and profitability of assets. MME Group has decades of accumulated knowledge and experience in applying sacrificial anodes and impressed current systems to protect marine structures against corrosion.



ICAF (MGPS) Systems: Marine fouling in seawater cooling systems is a threat to the performance of ships and installations. Removal of marine growth in a ship's seawater lines also leads to increased cost and delays during maintenance. To reduce this risk, MME Group developed the Marine Growth Prevention System (MGPS), also known as Impressed Current Anti Fouling (ICAF).

Marine Surveys: MME Group was one of the pioneers that introduced the use of ultrasonic technology for thickness measurements in the marine industry. Nowadays, our Marine Survey division provides a full range of inspection services that enable owners and operators to safeguard the integrity, compliance and profitability of their vessels for the entire lifecycle.



Non-Destructive Testing: Our efficient NDT services help you detect defects in base materials, products, installations and equipment. This provides asset management data which enables you to prevent damage and related cost resulting from material failure.

Metallurgical Laboratory: Creating reliable structures and products starts with the quality of the used base materials. Making sure that the used materials meet the applicable standards, therefore plays a vital role in all industries.



Rope Access: Safely carrying out work at height always poses a challenge. Conventional access solutions such as cherry pickers or scaffolding are not suitable for all situations. Oftentimes, Rope Access is a cost-efficient and safe alternative.

NDT Training: Supporting A Longer Life for materials, products and structures is only possible with skilled staff. Recognizing this importance, MME Group founded the first Non-Destructive Testing Training Centre in The Netherlands in 1969.



Playground & Recreational Safety: Playing is indispensable for the intellectual, social, motoric and emotional development of children. Children can only enjoy the beneficial effects of play if it can take place in a safe environment.

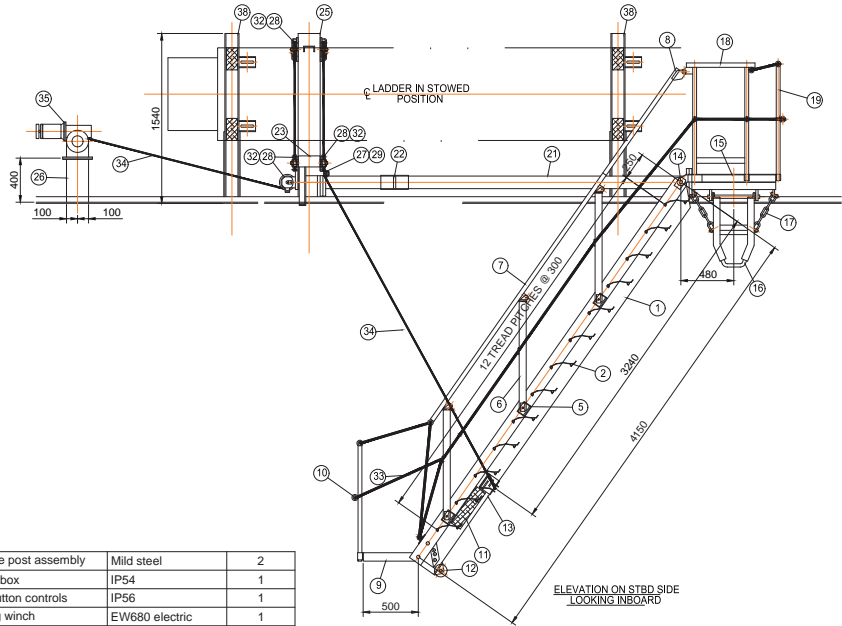
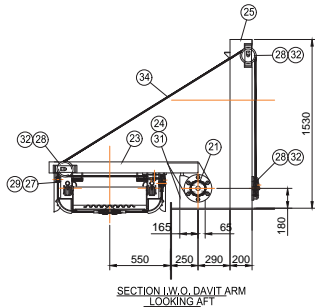
ACCOMMODATION LADDERS



Accommodation Ladders

Accommodation ladders

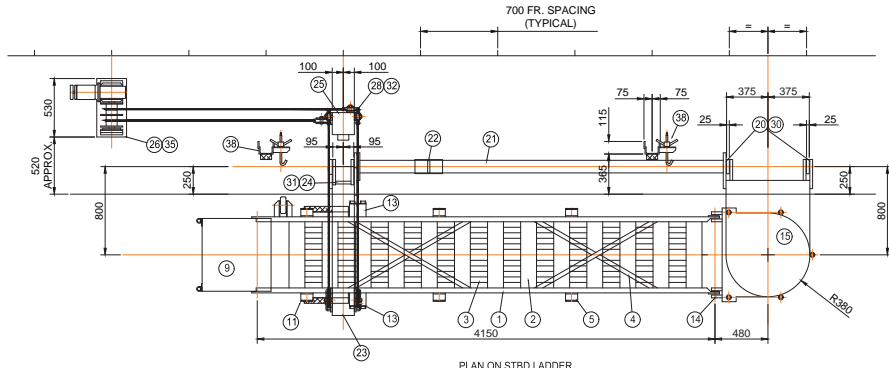
Harbinger seawater resistant aluminium, fixed curved step accommodation ladders with extruded treads provide a safe walking surface. With inclination angles ranging from 0 to 55 degrees from horizontal, these ladders are suitable for the majority of vessel types. The ladders have solid, lightweight stringers of own design and are fitted with wire guides.



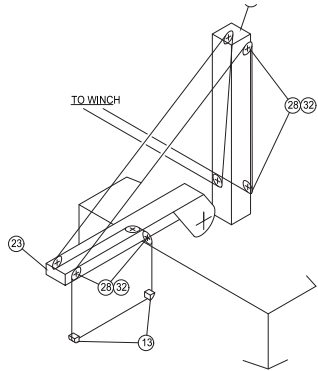
Note:
 * Indicates item (not shown on drawing),
 supplied with equipment, to be positioned
 to suit by shipbuilder.

19	T.T.P. stanchion	Mild steel	1	38	Stowage post assembly	Mild steel	2
18	T.T.P. handrails	Mild steel	2	37	Control box	IP54	1
17	Understay chain	Mild steel	2	36	Push button controls	IP56	1
16	Understay	Mild steel	1	35	Hoisting winch	EW680 electric	1
15	Turntable top platform	Mild steel	1	34	Hoisting wire	Ø10 mm G.S.W.R.	2
14	Ladder pivot pin	Mild steel	2	33	Manrope	Ø16 mm PP	AS required
13	Rope guide	Mild steel	2	32	Sheave pin	Stainless steel 316	8
12	Quay roller	Mild steel	1	31	Davit arm pivot pin	Stainless steel 316	1
11	Chafing block	Hardwood	2	30	T.T.P. pivot pin	Stainless steel 316	2
10	Bottom platform stanchion	Alum. alloy 6082 T6	2	29	Guide roller pin	Stainless steel 316	1
9	Bottom platform	Alum. alloy 6082 T6	1	28	Ø6" sheave	Nylatron	8
8	Handrail link	Alum. alloy 6082 T6	2	27	Ø2" guide roller	Nylatron	1
7	Folding handrail	Alum. alloy 6082 T6	2	26	Winch seat	Mild steel	1
6	Folding stanchion	Alum. alloy 6082 T6	6	25	Davit post	Mild steel	1
5	Stanchion box	Alum. alloy 6082 T6	6	24	Davit arm support/deck lug	Mild steel	1
4	Bracing	Alum. alloy 6082 T6	As required	23	Davit arm	Mild steel	1
3	Screening	Alum. alloy 6082 T6	As required	22	Torque tube sleeve	Mild steel	1
2	Curved step	Alum. alloy 6082 T6	13	21	Torque tube	Mild steel	1
1	Accommodation ladder	Alum. alloy 6082 T6	1	20	Deck lug	Mild steel	2
Item	Description	Material	No. off	Item	Description	Material	No. off

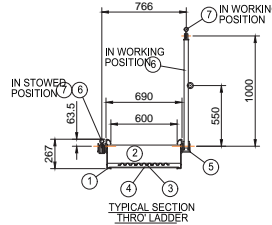
Date:			Catholic Protection Division Rieddekerstraat 16 P.O. Box 4222 2980 GE Ridderkerk Netherlands Tel: +31 (0)180 48 28 28 E-mail: sales@mme.nl www.mme-group.com		Projection:  Scale: NTS
			Order number:	Accommodation Ladder & Self-Stowing Gear Gangway (4.15 m)	
Description:	Drawn: ESM	Date: 19-08-19	Proj:		Sheet 1/2
	Checked: RvW	Date: 23-08-19	Dwg: GA.001-04-B01		
Rev:	Approved: TYNE	Date: 25-09-19	Copyright MME. No part of this drawing may be copied, disclosed, or made public, in any form, without prior written consent of Materiaal Metingen Europe.		



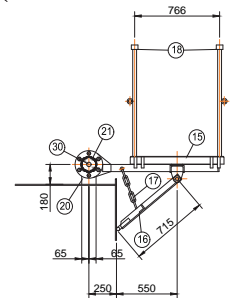
PLAN ON STRD LADDER



RIGGING DIAGRAM
NOT TO SCALE

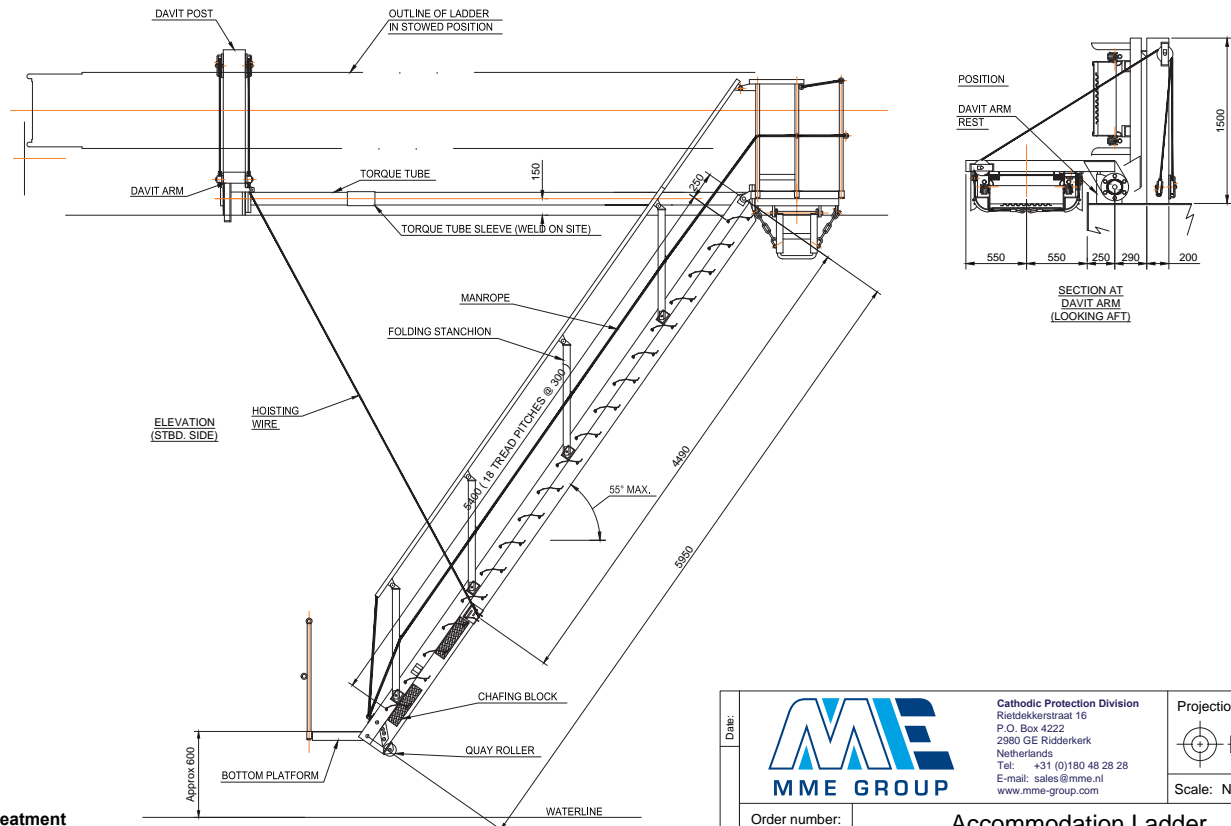


TYPICAL SECTION
THRO LADDER



SECTION I.W.O. TOP PLATFORM
LOOKING FORWARD

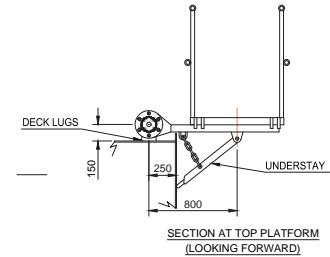
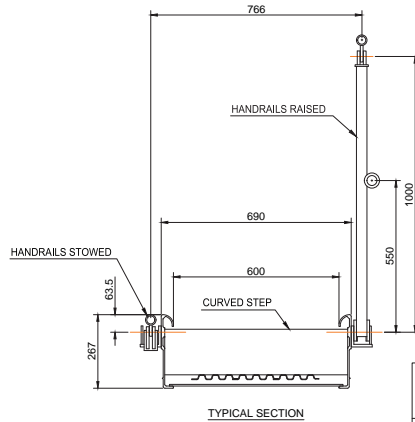
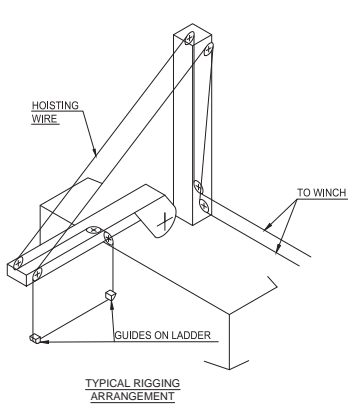
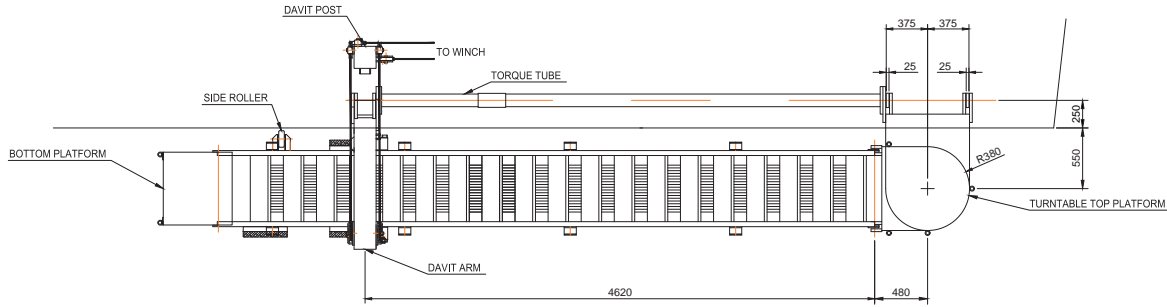
Date:			Cathodic Protection Division Rieddekerstraat 16 P.O. Box 4222 2980 GE Ridderkerk Netherlands Tel: +31 (0)180 48 28 28 E-mail: sales@mme.nl www.mme-group.com	Projection: 
Order number:	Accommodation Ladder & Self-Stowing Gear Gangway (4.15 m)			
Description:	Drawn: ESM	Date: 19-08-19	Project:	Sheet 2/2
	Checked: RvW	Date: 23-08-19	Dwg: GA.001-04-B01	
Rev:	Approved: TYNE	Date: 25-09-19	Copyright MME. No part of this drawing may be copied, disclosed, or made public, in any form, without prior written consent of Materiaal Metingen Europe.	



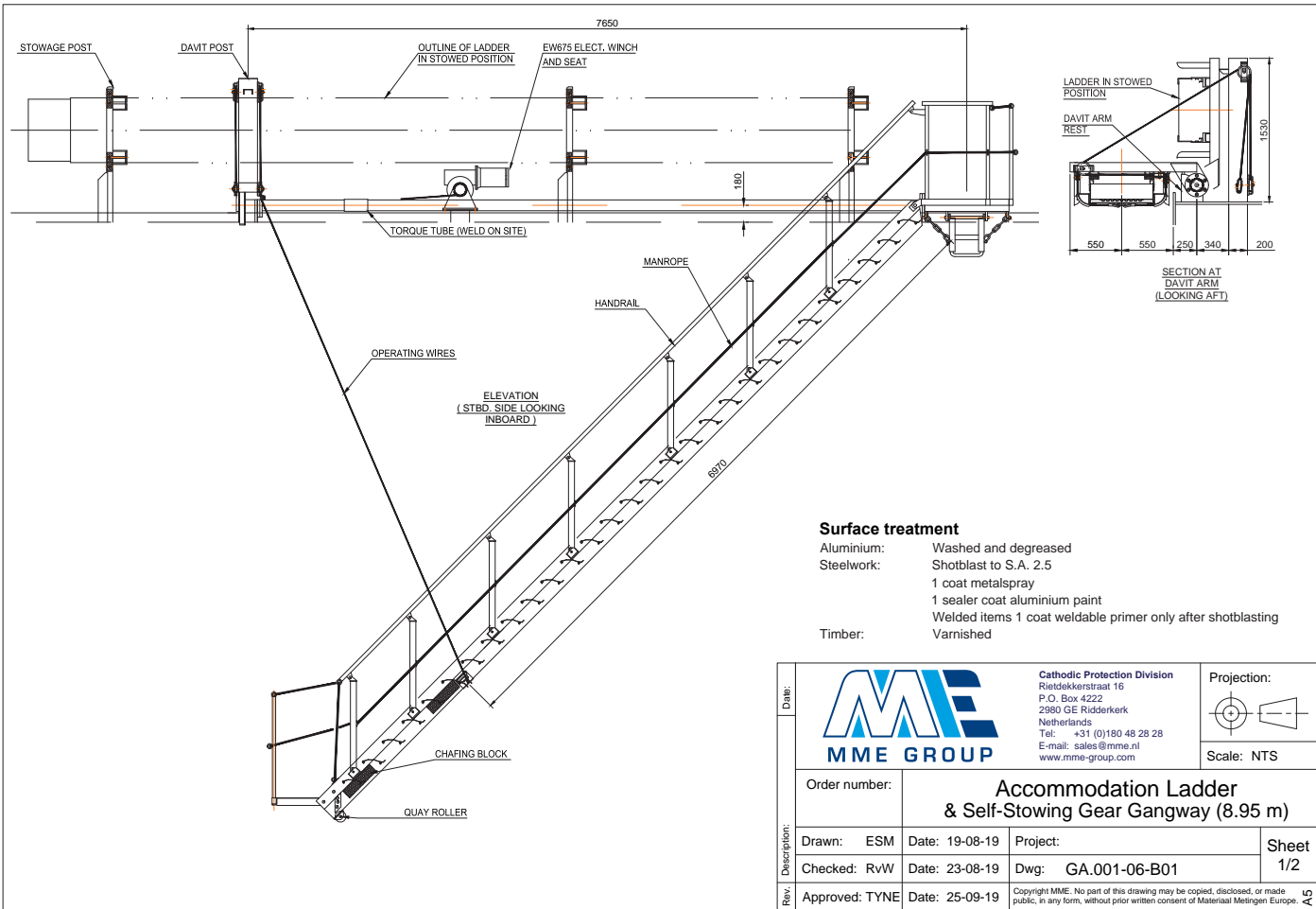
Surface treatment

- Aluminium: Washed and degreased
- Steelwork: Shotblast to S.A. 2.5
 - 1 coat metalspray
 - 1 sealer coat aluminium paint
 - Welded items 1 coat weldable primer only after shotblasting
- Timber: Varnished

Date:			Cathodic Protection Division Rieddekerstraat 16 P.O. Box 4222 2980 GE Ridderkerk Netherlands Tel: +31 (0)180 48 28 28 E-mail: sales@mme.nl www.mme-group.com	Projection: 
Order number:	Accommodation Ladder & Self-Stowing Gear Gangway (5.95 m)			
Description:	Drawn: ESM	Date: 19-08-19	Project:	Sheet 1/2
	Checked: RvW	Date: 23-08-19	Dwg: GA.001-05-B01	
Rev:	Approved: TYNE	Date: 25-09-19	Copyright MME. No part of this drawing may be copied, disclosed, or made public, in any form, without prior written consent of Materiaal Metingen Europe.	



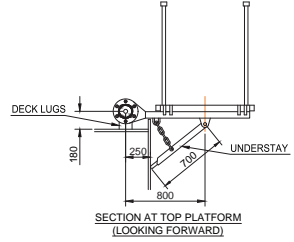
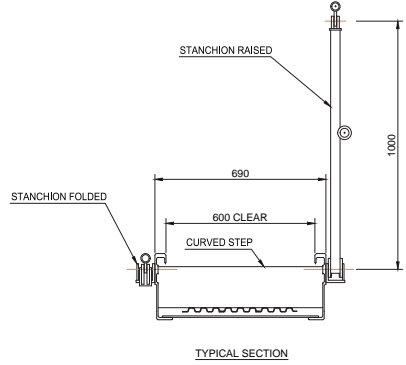
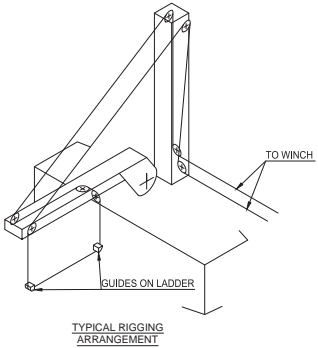
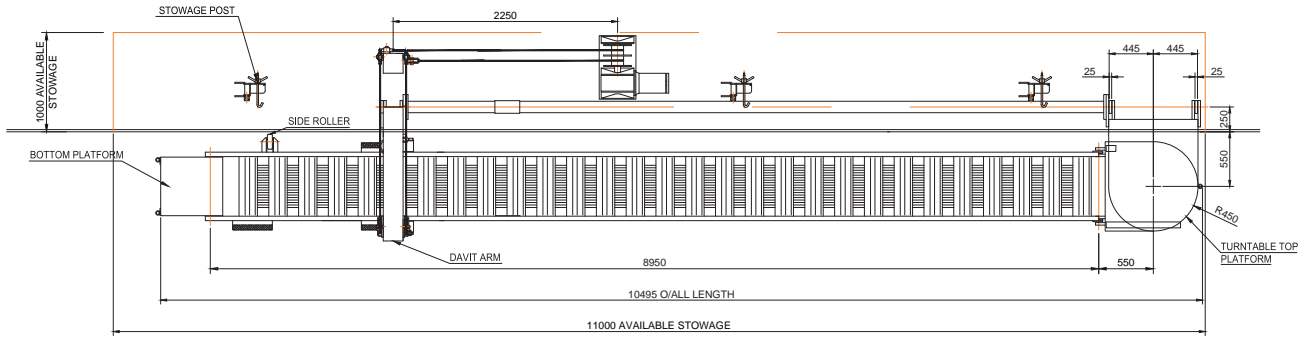
Rev.	Date:		 <p>MME GROUP</p>	Cathodic Protection Division Riedelkerstraat 16 P.O. Box 4222 2980 GE Ridderkerk Netherlands Tel: +31 (0)180 48 28 28 E-mail: sales@mme.nl www.mme-group.com	Projection:  Scale: NTS
	Order number:				
Description:	Drawn: ESM	Date: 19-08-19	Project:	Dwg: GA.001-05-B01	Sheet 2/2
	Checked: RvW	Date: 23-08-19	Approved: TYNE		
Copyright MME. No part of this drawing may be copied, disclosed, or made public, in any form, without prior written consent of Materiaal Metingen Europe.					



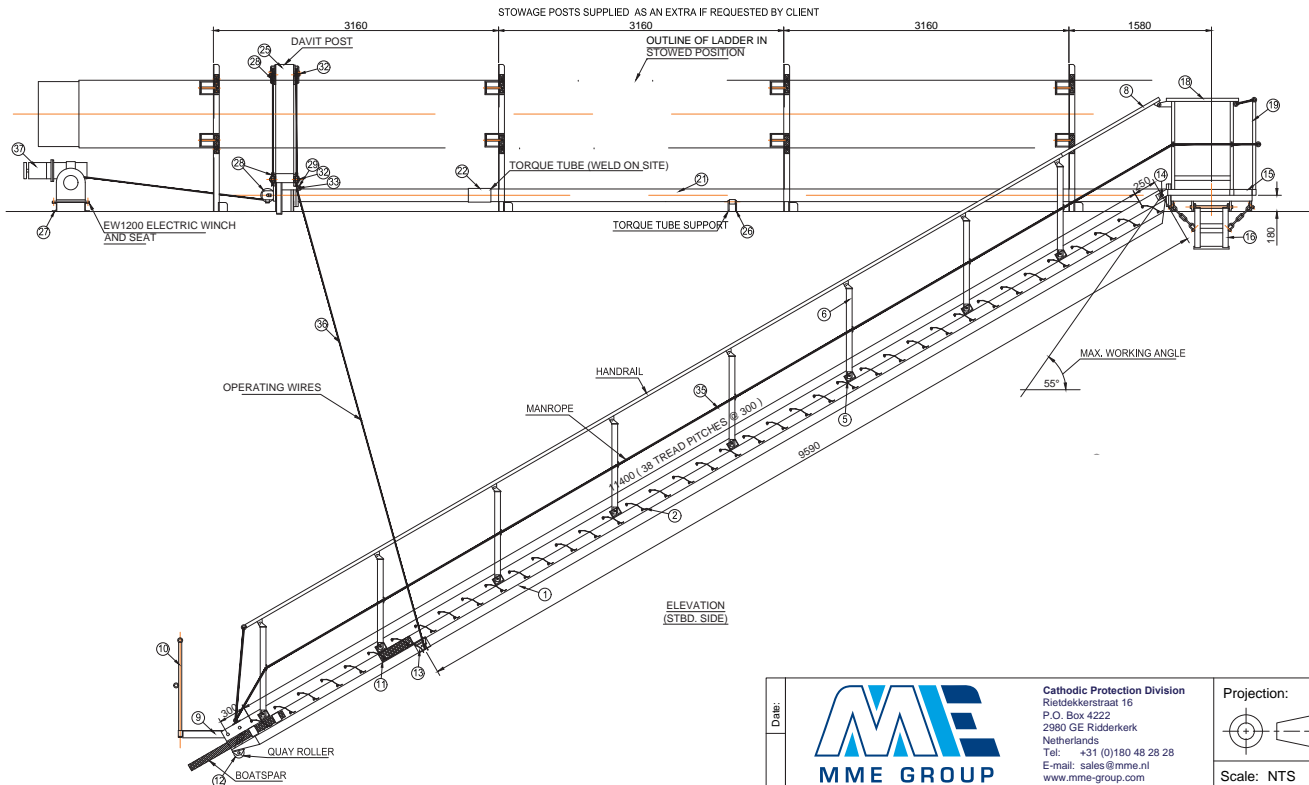
Surface treatment

- Aluminium: Washed and degreased
- Steelwork: Shotblast to S.A. 2.5
1 coat metalspray
1 sealer coat aluminium paint
- Welded items 1 coat weldable primer only after shotblasting
- Timber: Varnished

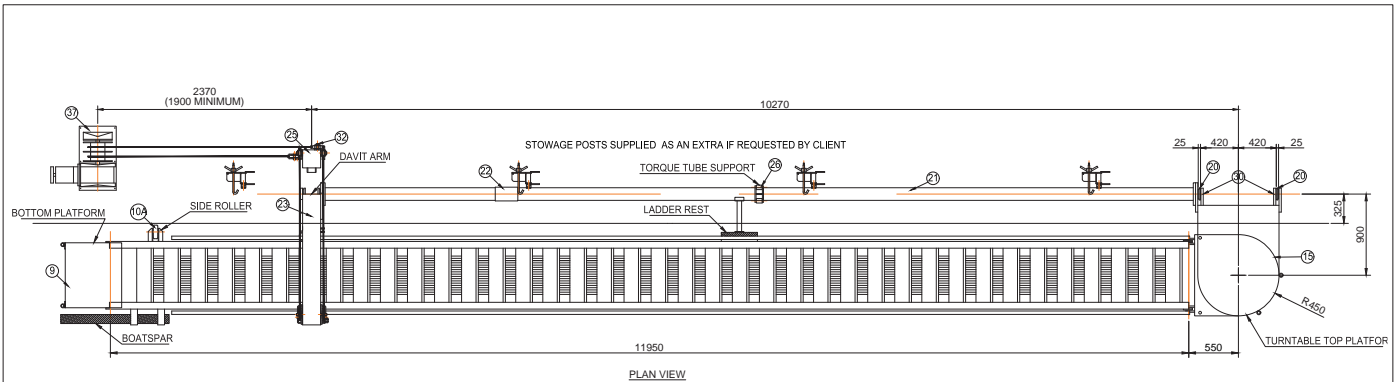
Date:			Catholic Protection Division Rieldekkerstraat 16 P.O. Box 4222 2980 GE Ridderkerk Netherlands Tel: +31 (0)180 48 28 28 E-mail: sales@mme.nl www.mme-group.com	Projection: 
Order number:	Accommodation Ladder & Self-Stowing Gear Gangway (8.95 m)			
Description:	Drawn: ESM	Date: 19-08-19	Project:	Sheet 1/2
	Checked: RvW	Date: 23-08-19	Dwg: GA.001-06-B01	
Rev:	Approved: TYNE	Date: 25-09-19	Copyright MME. No part of this drawing may be copied, disclosed, or made public, in any form, without prior written consent of Materiaal Metingen Europe.	



Date:			Cathodic Protection Division Rieddekkerstraat 16 P.O. Box 4222 2980 GE Ridderkerk Netherlands Tel: +31 (0)180 48 28 28 E-mail: sales@mme.nl www.mme-group.com	Projection: 
	Order number:		Accommodation Ladder & Self-Stowing Gear Gangway (8.95 m)	
Description:	Drawn: ESM	Date: 19-08-19	Project:	Sheet 2/2
	Checked: RvW	Date: 23-08-19	Dwg: GA.001-06-B01	
Approved: TYNE	Date: 25-09-19		Copyright MME. No part of this drawing may be copied, disclosed, or made public, in any form, without prior written consent of Materiaal Metingen Europe.	



Date:			Catholic Protection Division Rieledekerstraat 16 P.O. Box 4222 2980 GE Ridderkerk Netherlands Tel: +31 (0)180 48 28 28 E-mail: sales@mme.nl www.mme-group.com	Projection: 
Order number:		Accommodation Ladder & Self-Stowing Gear Gangway (11.95 m)		
Description:	Drawn: ESM	Date: 19-08-19	Project:	Sheet 1/3
	Checked: RvW	Date: 23-08-19	Dwg: GA.001-07-B01	
Rev.	Approved: TYNE	Date: 25-09-19	Copyright MME. No part of this drawing may be copied, disclosed, or made public, in any form, without prior written consent of Materiaal Metingen Europe.	

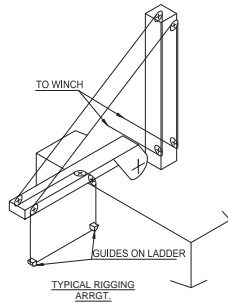


Note:

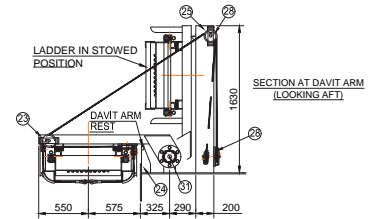
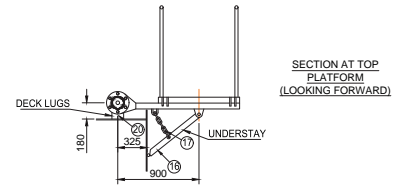
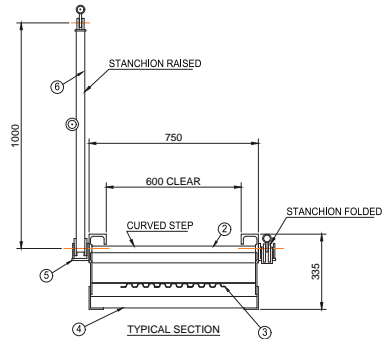
* Indicates item (not shown on drawing), supplied with equipment, to be positioned to suit by shipbuilder.

20	Deck lug	Mild steel	2	@40	Control box	IP54	2
19	T.T.P. stanchion	Mild steel	1	*39	Limit switch	IP66	1
18	T.T.P. handrails	Mild steel	2	*38	Push button controls	IP66	1
17	Understay chain	Mild steel	2	37	Hoisting winch	EW675 electric IP56	1
16	Understay	Mild steel	1	36	Hoisting wire	Ø10 mm G.S.W.R.	2
15	Turntable top platform	Mild steel	1	35	Manrope	Ø16 mm PP	AS required
14	Ladder pivot pin	Mild steel	2	34	Stowage post	Mild steel	4
13	Rope guide	Mild steel	2	33	Guide roller pin	Stainless steel 316	1
12	Quay roller	Mild steel	1	32	Sheave pin	Stainless steel 316	8
11	Chafing block	Hardwood	3	31	Davit arm pivot pin	Stainless steel 316	1
10a	Ship side roller	Al/rubber tyredwheel	1	30	T.T.P. pivot pin	Stainless steel 316	2
10	Bottom platform stanchion	Alum. alloy 6082 T6	2	29	Ø2" guide roller	Nylatron	1
9	Bottom platform	Alum. alloy 6082 T6	1	28	Ø6" sheave	Nylatron	8
8	Handrail link	Alum. alloy 6082 T6	2	27	Winch seat	Mild steel	1
7	Folding handrail	Alum. alloy 6082 T6	2	26	Torque tube support	Mild steel	1
6	Folding stanchion	Alum. alloy 6082 T6	10	25	Davit post	Mild steel	1
5	Stanchion box	Alum. alloy 6082 T6	10	24	Davit arm support/deck lug	Mild steel	1
4	Bracing	Alum. alloy 6082 T6	As required	23	Davit arm	Mild steel	1
3	Screening	Alum. alloy 6082 T6	2	22	Torque tube sleeve	Mild steel	1
2	Curved step	Alum. alloy 6082 T6	39	21	Torque tube	Mild steel	1
1	Accommodation ladder	Alum. alloy 6082 T6	1	20	Deck lug	Mild steel	2
Item	Description	Material	No. off	Item	Description	Material	No. off

Date:			Catholic Protection Division Riedelkerstraat 16 P.O. Box 4222 2980 GE Ridderkerk Netherlands Tel: +31 (0)180 48 28 28 E-mail: sales@mme.nl www.mme-group.com		Projection:  Scale: NTS
			Order number: Accommodation Ladder & Self-Stowing Gear Gangway (11.95 m)		
Description:	Drawn: ESM	Date: 19-08-19	Project:	Sheet 2/3	
	Checked: RvW	Date: 23-08-19	Dwg: GA.001-07-B01		
Rev.	Approved: TYNE	Date: 25-09-19	Copyright MME. No part of this drawing may be copied, disclosed, or made public, in any form, without prior written consent of Materiaal Metingen Europe.		



OPERATING VI



Date:				Catholic Protection Division Riedelkerstraat 16 P.O. Box 4222 2980 GE Ridderkerk Netherlands Tel: +31 (0)180 48 28 28 E-mail: sales@mme.nl www.mme-group.com	Projection: 
Order number:		Accommodation Ladder & Self-Stowing Gear Gangway (11.95 m)			
Description:	Drawn: ESM	Date: 19-08-19	Project:		Sheet 3/3
	Checked: RvW	Date: 23-08-19	Dwg: GA.001-07-B01		
Rev:	Approved: TYNE	Date: 25-09-19	Copyright MME. No part of this drawing may be copied, disclosed, or made public, in any form, without prior written consent of Materiaal Metingen Europe.		

Replacement Accommodation Ladder

When an accommodation ladder needs to be replaced, it is not always possible/desirable to purchase it from the original supplier. You want a fast and cost-effective solution to get your vessel sailing again. In that situation, Harbinger replacement accommodation ladders are your best choice.

In order to ensure a correct fit of the ladder to the existing stowing gear, detailed information of the existing system is required. All replacement accommodation ladders are manufactured by using either the original drawings, client supplied measurements using our checklist, or by using information obtained during a visit to the vessel.

Advantages of Harbinger replacement accommodation ladders:

- Quick delivery times
- Competitive pricing and value for money
- No modifications required thus saving time and money
- Use of high quality light-weight seawater resistant aluminium

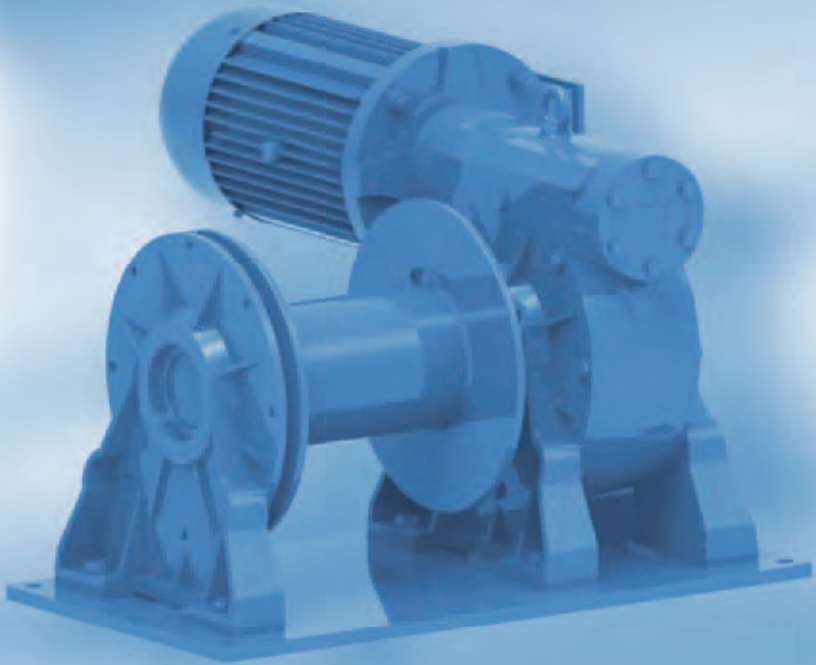
Scan one of the codes below for a replacement form



For an accommodation ladder with top platform



For an accommodation ladder without top platform



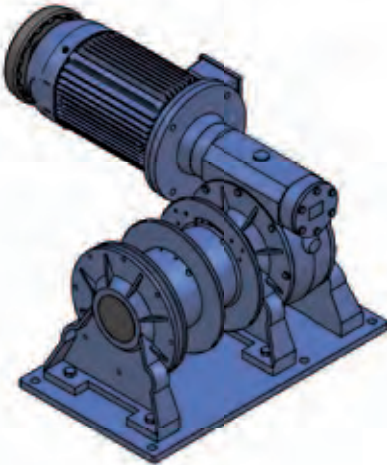
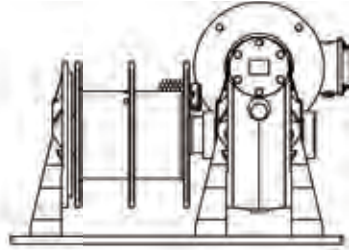
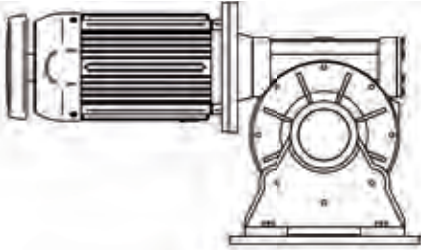
Winches

Winches

The winches are designed to position and hold accommodation and ship-to-shore ladders and ladders between vessels and offshore installations. Constructed in accordance with SOLAS requirements for international shipping, the range features a dynamically and statically self-braking wormgear and emergency hand crank. Each type may be configured for single or twin rope operation and powered by means by means of an electric or pneumatic motor. Custom-built designs are also possible.

Accommodation Ladder Winches: 500W, 850W, 1000W, 1500W

Wormgear Winches: 750W



Standard Gangway types

- **Shallow Angle Lightweight Aluminium Gangways (SHALA gangways)**
- **Steep Angle Lightweight Aluminium Gangways (SALA gangways)**
- **Turn Table Platforms**
- **Bulwark Ladders**
- **Shore Type A Gangways**
- **Onshore & Offshore Overhead Braced Gangways**
- **Modular Gangways**
- **Naval Brows**



SHALA Gangways

SHALA Gangways

Short range, shallow 0 - 30 degrees working angle, lightweight aluminium gangways for easy ship-shore access with standard ship hook and jetty roller.

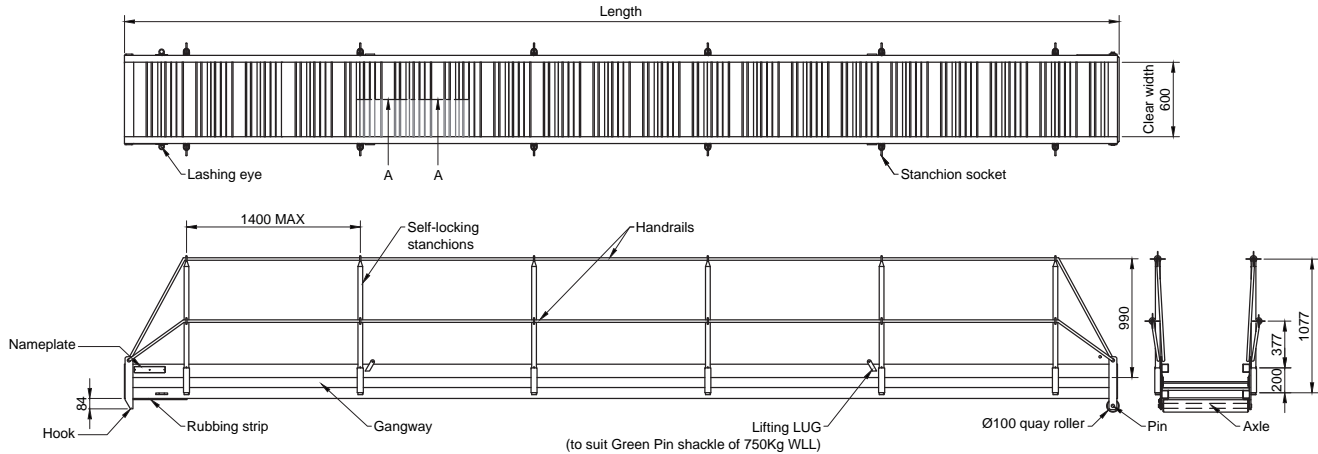
Standard supply:

- Manufactured in accordance with ISO 7061
- Manufactured from Marine Grade Lightweight Aluminium 6082 T6
- 600 mm clear width
- Anti-slip surface
- Standard ship hook & quay roller
- Self-locking stanchions and polypropylene hand rail & half-height
- Lifting & lashing lugs

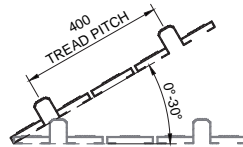
Optional extra's on request:

- Safety net
- Lifting sling
- Removable rigid handrails
- Ship hook, swivel yoke options to suit vessel type
- Quay roller options to suit site availability
- Centre transport wheels
- In house test certificate
- 3rd party test certificate

Product Specifications	
Length (m)	Weight (Kg)
2	50
2,5	58
3	72
3,5	75
4	89
4,5	101
5	108
5,5	119
6	129
6,5	166
7	176
7,5	190
8	202
8,5	207
9	226
9,5	276
10	287
11	341
11,5	359
12	372



Section A-A



AVAILABLE LENGTHS			
Length (m)	Weight (Kg)	Length (m)	Weight (Kg)
2	50	7	176
2,5	58	7,5	190
3	72	8	202
3,5	75	8,5	207
4	89	9	226
4,5	101	9,5	276
5	108	10	287
5,5	119	11	341
6	129	11,5	359
6,5	166	12	372

Included certificates

- Gangways are type approved by DNV-GL to ISO 7061 in accordance with IMO MSC.1/CIRC. 1331
- Factory issued load test

Optional accessories

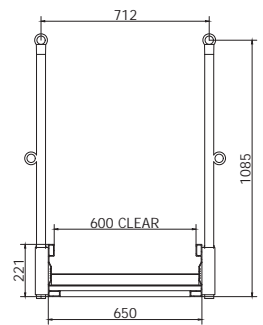
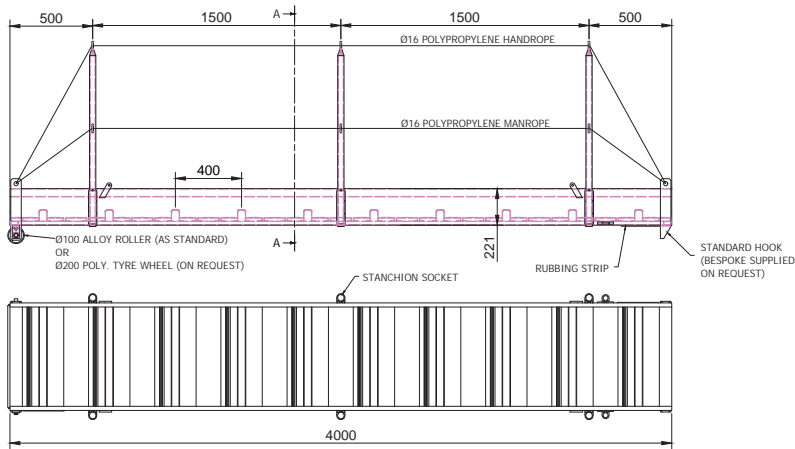
- 3rd party witness load test certificate
- Safety net
- Lifting sling
- Ø200 wheels

Optional customization

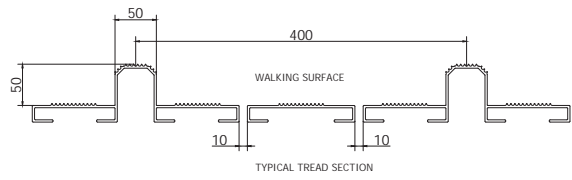
- Rigid handrails
- Custom hook
- Any other modification on request

Gangway	Aluminium alloy 6082-T6
Stanchions	Aluminium alloy 6082-T6
Pins & Axles	Stainless steel 316
Handrails	Polypropylene rope Ø16
Description	Material

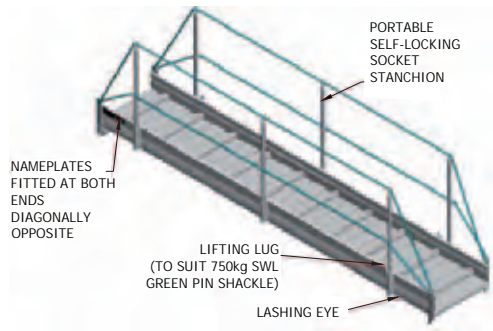
Date:			Cathodic Protection Division Rieddekerstraat 16 P.O. Box 4222 2980 GE Ridderkerk Netherlands Tel: +31 (0)180 48 28 28 E-mail: sales@mme.nl www.mme-group.com		Projection:  Scale: NTS
			Order number:	SHALA Gangways Shallow Angle Lightweight Aluminium Gangways	
Description:	Drawn: ESM	Date: 26-04-19	Project:	Sheet 1/1	
	Checked: RvW	Date: 28-05-19	Dwg: GA.002-01-B01		
Rev:	Approved: PP	Date: 28-05-19	Copyright MME. No part of this drawing may be copied, disclosed, or made public, in any form, without prior written consent of Materiaal Metingen Europe.		



A-A: TYPICAL SECTION



TYPICAL TREAD SECTION



NAMEPLATES
FITTED AT BOTH
ENDS
DIAGONALLY
OPPOSITE

LIFTING LUG
(TO SUIT 750kg SWL
GREEN PIN SHACKLE)

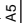
LASHING EYE

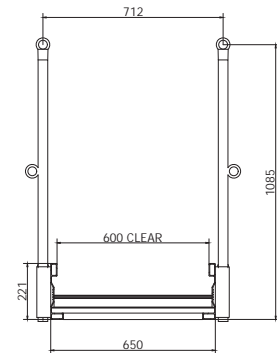
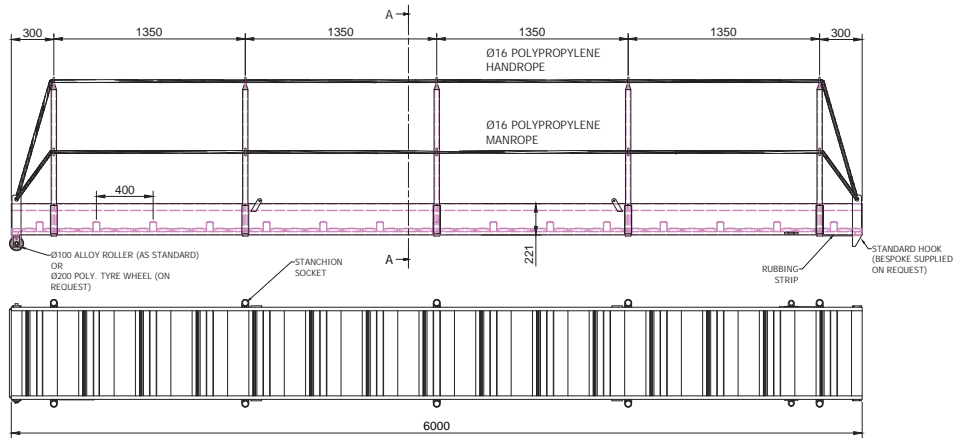
PORTABLE
SELF-LOCKING
SOCKET
STANCHION

GANGWAYS TYPE APPROVED BY DNV-GL TO ISO 7061
IN ACCORDANCE WITH IMO MSC.1/CIRC.1331
TEST LOAD: 5kN/M²
SWL: 4kN/M²
WEIGHT: 86kg
MATERIAL : ALUMINIUM ALLOY 6082 T6
TO SUIT ANGLES UP TO 30°

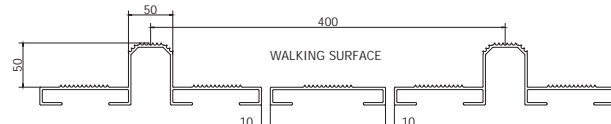
OPTIONAL EXTRAS ON REQUEST

- SAFETY NET
- LIFTING SLING
- IN HOUSE TEST CERTIFICATE
- 3RD PARTY TEST CERTIFICATE
- REMOVABLE RIGID HANDRAILS

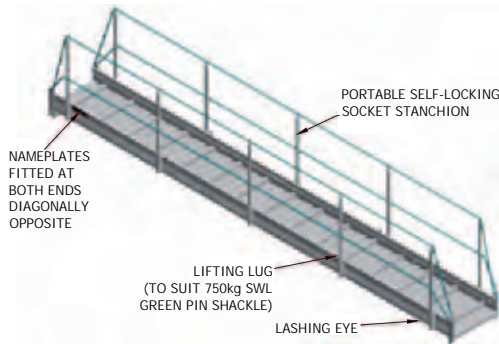
Rev. / Description:	Date:			Cathodic Protection Division Rieddekerstraat 16 P.O. Box 4222 2980 GE Ridderkerk Netherlands Tel: +31 (0)180 48 28 28 E-mail: sales@mme.nl www.mme-group.com	Projection: 
	Order number:	SHALA Gangways (Shallow Angle Lightweight Aluminium - 4m)			
Drawn: ESM	Date: 22-08-19	Project:			Sheet 1/1
Checked: RvW	Date: 23-08-19	Dwg: GA.002-02-B01			
Approved: TYNE	Date: 25-09-19	Copyright MME. No part of this drawing may be copied, disclosed, or made public, in any form, without prior written consent of Materiaal Metingen Europe.			



A-A: TYPICAL SECTION



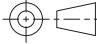
TYPICAL TREAD SECTION

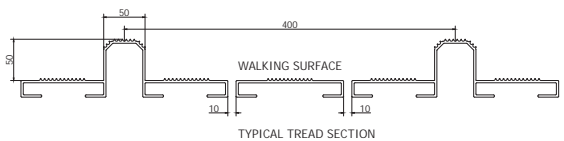
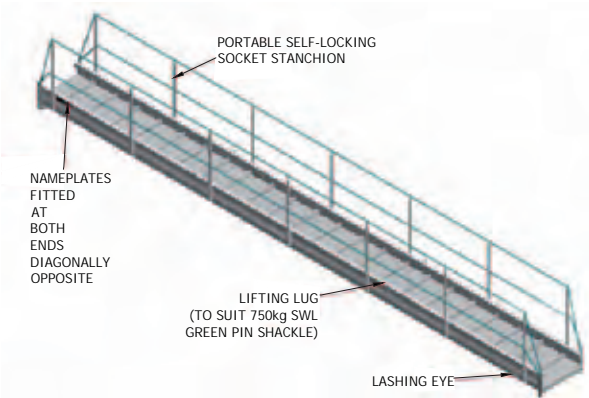
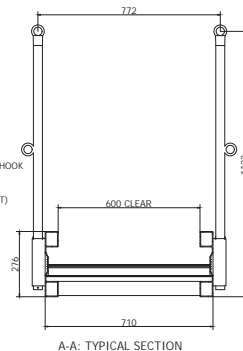
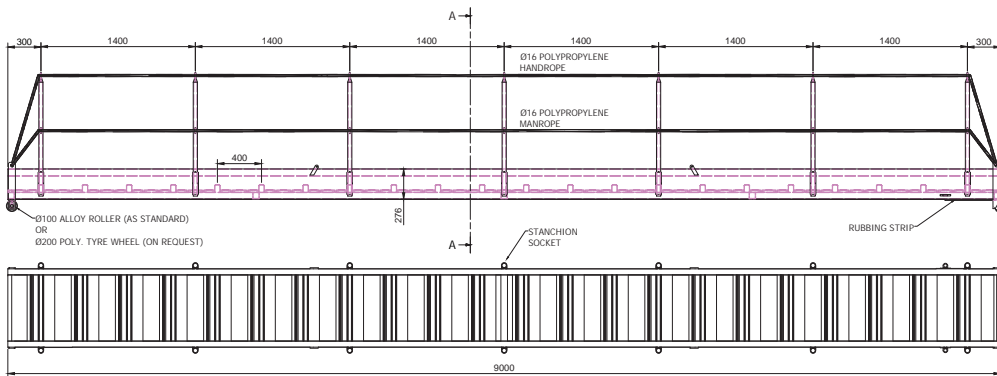


GANGWAYS TYPE APPROVED BY DNV-GL TO ISO 7061
 IN ACCORDANCE WITH IMO MSC.1/CIRC.1331
 TEST LOAD: 5kN/M²
 SWL: 4kN/M²
 WEIGHT: 127kg
 MATERIAL : ALUMINIUM ALLOY 6082 T6
 TO SUIT ANGLES UP TO 30°

OPTIONAL EXTRAS ON REQUEST

- SAFETY NET
- LIFTING SLING
- IN HOUSE TEST CERTIFICATE
- 3RD PARTY TEST CERTIFICATE
- REMOVABLE RIGID HANDRAILS

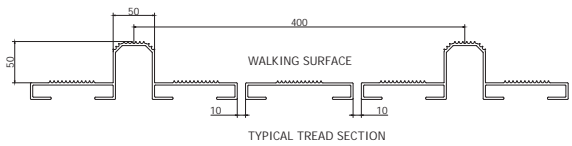
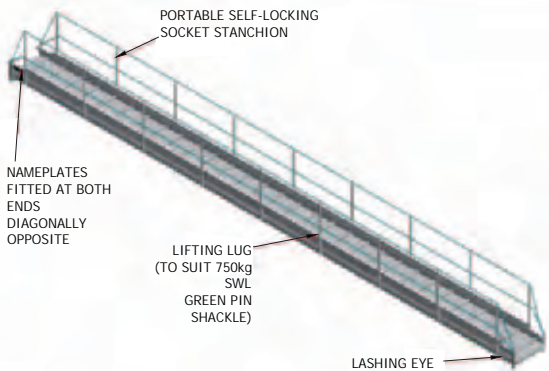
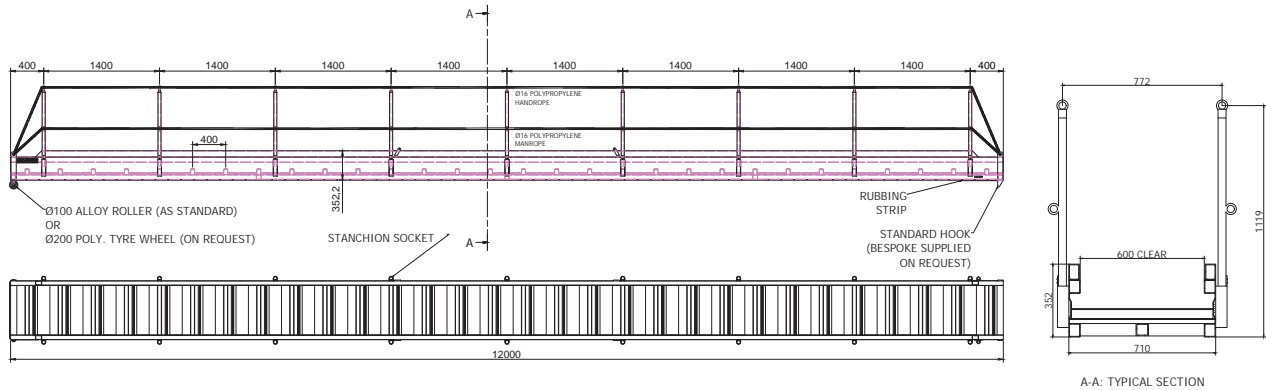
Date:			Cathodic Protection Division Rieddekerstraat 16 P.O. Box 4222 2980 GE Ridderkerk Netherlands Tel: +31 (0)180 48 28 28 E-mail: sales@mme.nl www.mme-group.com		Projection:  Scale: NTS
			Order number:	SHALA Gangways (Shallow Angle Lightweight Aluminium - 6m)	
Description:	Drawn: ESM	Date: 22-08-19	Proj:		Sheet 1/1
	Checked: RvW	Date: 23-08-19	Dwg: GA.002-03-B01		
Rev:	Approved: TYNE	Date: 25-09-19	Copyright MME. No part of this drawing may be copied, disclosed, or made public, in any form, without prior written consent of Materiaal Metingen Europe.		



GANGWAYS TYPE APPROVED BY DNV-GL TO ISO 7061
 IN ACCORDANCE WITH IMO MSC.1/CIRC.1331
 TEST LOAD: 5kN/M²
 SWL: 4kN/M²
 WEIGHT: 222kg
 MATERIAL : ALUMINIUM ALLOY 6082 T2
 TO SUIT ANGLES UP TO 30°


- OPTIONAL EXTRAS ON REQUEST
- SAFETY NET
 - LIFTING SLING
 - IN HOUSE TEST CERTIFICATE
 - 3RD PARTY TEST CERTIFICATE
 - REMOVABLE RIGID HANDRAILS

Date:			Cathodic Protection Division Riedelkerstraat 16 P.O. Box 4222 2980 GE Ridderkerk Netherlands Tel: +31 (0)180 48 28 28 E-mail: sales@mme.nl www.mme-group.com		Projection: 
			Scale: NTS		
Order number:	SHALA Gangways (Shallow Angle Lightweight Aluminium - 9m)				
Drawn: ESM	Date: 22-08-19	Project:	Sheet 1/1		
Checked: RvW	Date: 23-08-19	Dwg: GA.002-04-B01			
Approved: TYNE	Date: 25-09-19	Copyright MME. No part of this drawing may be copied, disclosed, or made public, in any form, without prior written consent of Materiaal Metingen Europe. 			



GANGWAYS TYPE APPROVED BY DNV-GL TO ISO 7061
 IN ACCORDANCE WITH IMO MSC.1/CIRC.1331
 TEST LOAD: 5kN/M²
 SWL: 4kN/M²
 WEIGHT: 367kg
 MATERIAL : ALUMINIUM ALLOY 6082 T6
 TO SUIT ANGLES UP TO 30°

- OPTIONAL EXTRAS ON REQUEST
- SAFETY NET
 - LIFTING SLING
 - IN HOUSE TEST CERTIFICATE
 - 3RD PARTY TEST CERTIFICATE
 - REMOVABLE RIGID HANDRAILS

Rev.	Date:			Cathodic Protection Division Riedelkerstraat 16 P.O. Box 4222 2980 GE Ridderkerk Netherlands Tel: +31 (0)180 48 28 28 E-mail: sales@mme.nl www.mme-group.com		Projection: 
	Description:			Scale: NTS		
Order number:		SHALA Gangways (Shallow Angle Lightweight Aluminium - 12m)				
Drawn: ESM		Date: 22-08-19	Project:		Sheet 1/1	
Checked: RvW		Date: 23-08-19	Dwg: GA.002-05-B01			
Approved: TYNE		Date: 25-09-19	Copyright MME. No part of this drawing may be copied, disclosed, or made public, in any form, without prior written consent of Materiaal Metingen Europe.			



SALA Gangways

SALA Gangways

Short range, steep 0 - 55 degrees working angle, lightweight aluminium gangways for easy ship-shore access with standard ship hook and jetty roller.

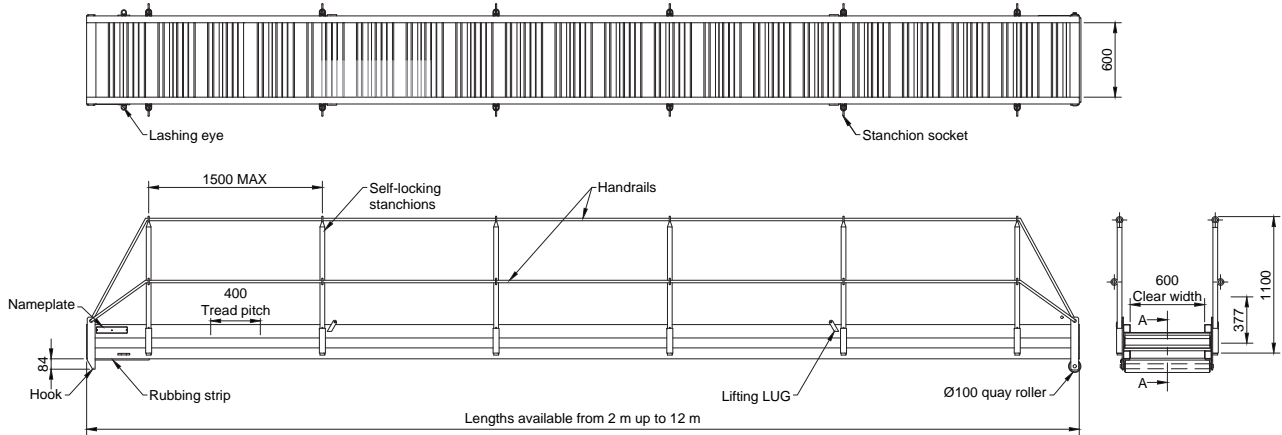
Standard supply:

- Manufactured in accordance with ISO 7061
- Manufactured from Marine Grade Lightweight Aluminium 6082 T6
- 600 mm clear width
- Anti-slip surface
- Standard ship hook & quay roller
- Self-locking stanchions and polypropylene hand rail & half-height
- Lifting & lashing lugs

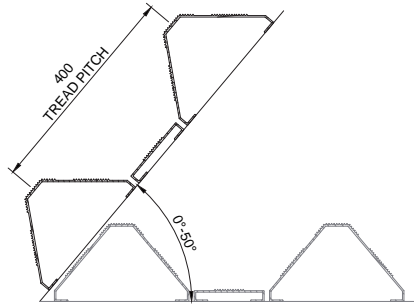
Optional extra's on request:

- Safety net
- Lifting sling
- Removable rigid handrails
- Ship hook, swivel yoke options to suit vessel type
- Quay roller options to suit site availability
- Centre transport wheels
- In house test certificate
- 3rd party test certificate

Product Specifications	
Length (m)	Weight (Kg)
2	50
2,5	58
3	72
3,5	75
4	89
4,5	101
5	108
5,5	119
6	129
6,5	166
7	176
7,5	190
8	202
8,5	207
9	226
9,5	276
10	287
11	341
11,5	359
12	372



Section A-A




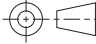
PRODUCT SPECIFICATIONS			
Length (m)	Weight (Kg)	Length (m)	Weight (Kg)
2	50	6,5	166
2,5	58	7	176
3	72	7,5	190
3,5	75	8	202
4	89	9	226
4,5	101	10	287
5	108	11	341
6	129	12	372

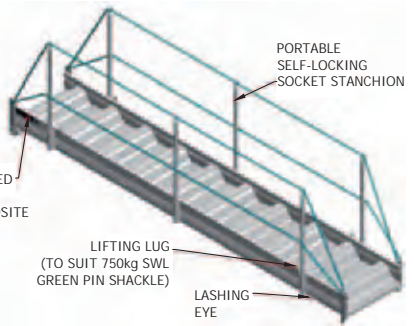
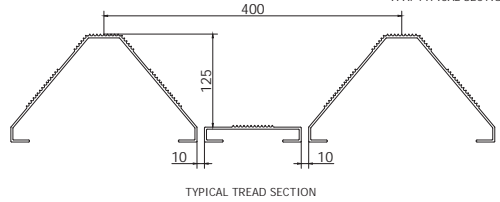
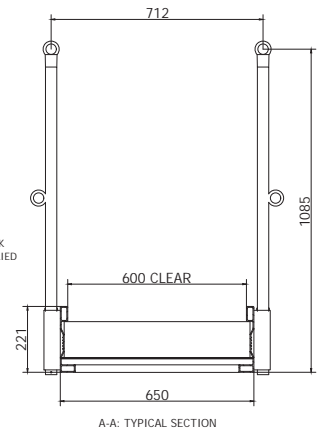
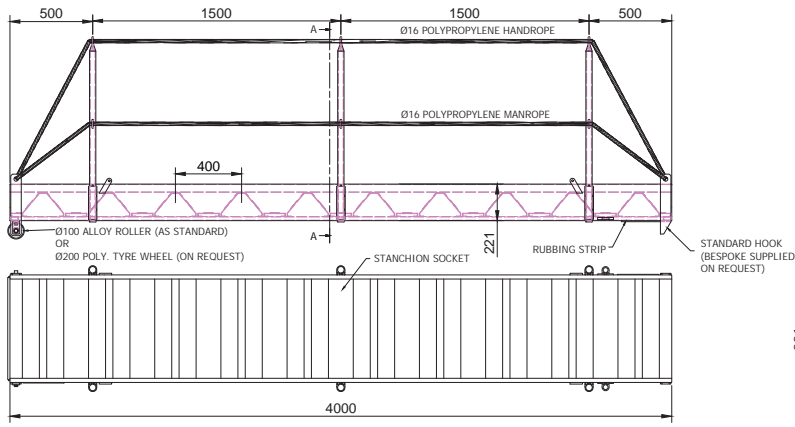
Optional accessories

- 3rd party witness load test
- Safety net
- Lifting sling
- Wheels

Optional customization

- Ridged handrails
- Hook

Date:			Cathodic Protection Division Riedelkerstraat 16 P.O. Box 4222 2980 GE Ridderkerk Netherlands Tel: +31 (0)180 48 28 28 E-mail: sales@mme.nl www.mme-group.com		Projection:  Scale: NTS
			Order number:	SALA Gangways Steep Angle Lightweight Aluminium Gangways	
Description:	Drawn: ESM	Date: 29-04-19	Project:	Sheet 1/1	
	Checked: RvW	Date: 28-05-19	Dwg: GA.003-01-B01		
Rev:	Approved: PP	Date: 28-05-19	Copyright MME. No part of this drawing may be copied, disclosed, or made public, in any form, without prior written consent of Materiaal Metingen Europe.		



NAMEPLATES FITTED AT BOTH ENDS DIAGONALLY OPPOSITE

LIFTING LUG (TO SUIT 750kg SWL GREEN PIN SHACKLE)


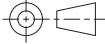
LASHING EYE

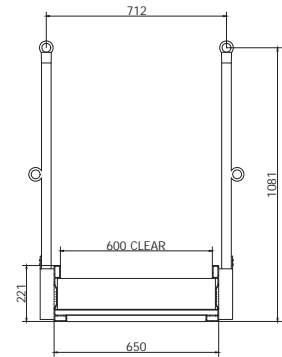
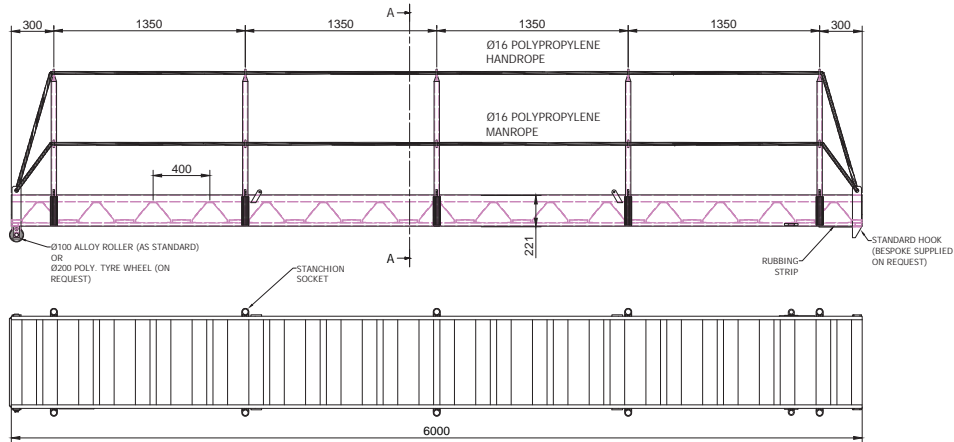
PORTABLE SELF-LOCKING SOCKET STANCHION

GANGWAYS TYPE APPROVED BY DNV-GL TO ISO 7061 IN ACCORDANCE WITH IMO MSC.1/CIRC.1331
 TEST LOAD: 5kN/M²
 SWL: 4kN/M²
 WEIGHT: 86kg
 MATERIAL : ALUMINIUM ALLOY 6082 T6
 TO SUIT ANGLES UP TO 50°

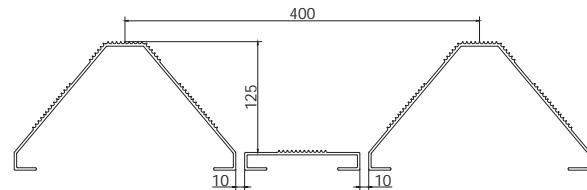
OPTIONAL EXTRAS ON REQUEST

- SAFETY NET
- LIFTING SLING
- IN HOUSE TEST CERTIFICATE
- 3RD PARTY TEST CERTIFICATE
- REMOVABLE RIGID HANDRAILS

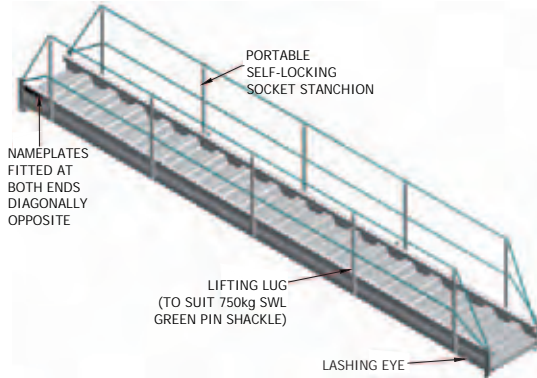
Date:			Cathodic Protection Division Rieddekerstraat 16 P.O. Box 4222 2980 GE Ridderkerk Netherlands Tel: +31 (0)180 48 28 28 E-mail: sales@mme.nl www.mme-group.com		Projection: 
			Order number:		SALA Gangways (Steep Angle Lightweight Aluminium - 4m)
Description:	Drawn: ESM	Date: 22-08-19	Project:		Sheet 1/1
	Checked: RvW	Date: 23-08-19	Dwg: GA.003-02-B01		
Rev:	Approved: TYNE	Date: 25-09-19	Copyright MME. No part of this drawing may be copied, disclosed, or made public, in any form, without prior written consent of Materiaal Metingen Europe.		



A-A: TYPICAL SECTION



TYPICAL TREAD SECTION

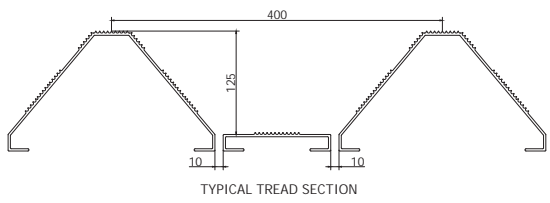
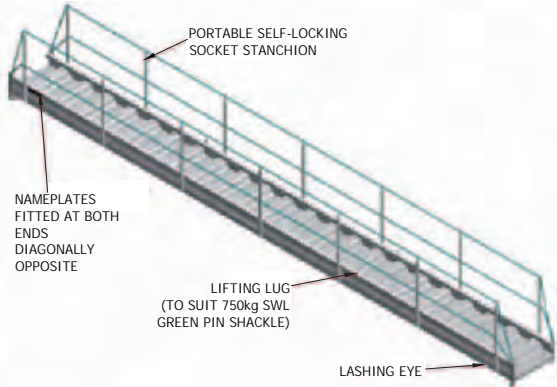
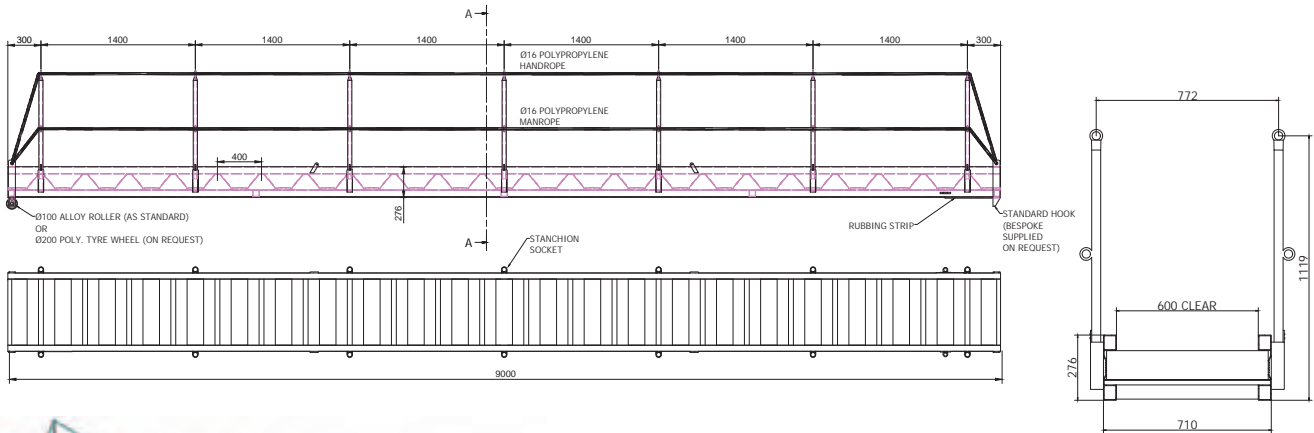


GANGWAYS TYPE APPROVED BY DNV-GL TO ISO 7061
 IN ACCORDANCE WITH IMO MSC.1/CIRC.1331
 TEST LOAD: 5kN/M²
 SWL: 4kN/M²
 WEIGHT: 126kg
 MATERIAL : ALUMINIUM ALLOY 6082 T6
 TO SUIT ANGLES UP TO 50°

OPTIONAL EXTRAS ON REQUEST


- SAFETY NET
- LIFTING SLING
- IN HOUSE TEST CERTIFICATE
- 3RD PARTY TEST CERTIFICATE
- REMOVABLE RIGID HANDRAILS

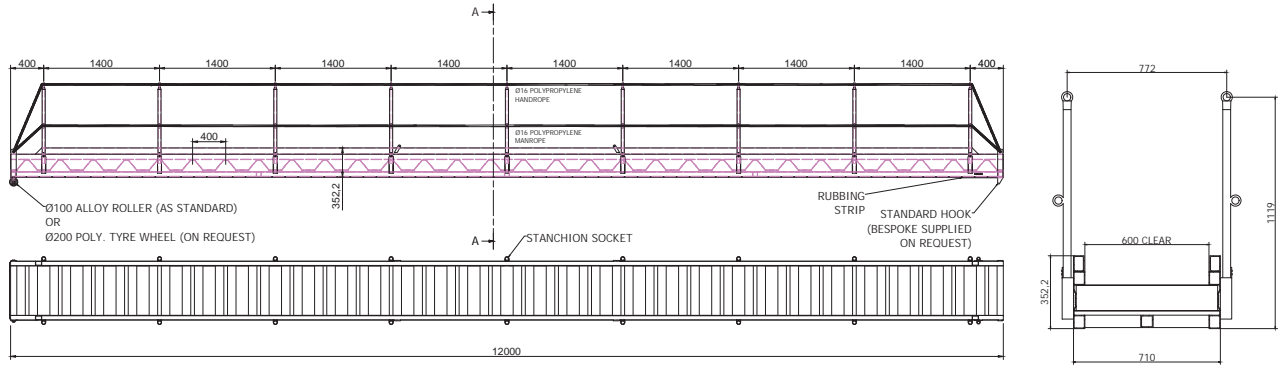
Date:			Cathodic Protection Division Riedelkerstraat 16 P.O. Box 4222 2980 GE Ridderkerk Netherlands Tel: +31 (0)180 48 28 28 E-mail: sales@mme.nl www.mme-group.com		Projection:  Scale: NTS
			Order number:	SALA Gangways (Steep Angle Lightweight Aluminium - 6m)	
Description:	Drawn: ESM	Date: 22-08-19	Project:	Sheet 1/1	
	Checked: RvW	Date: 23-08-19	Dwg: GA.003-03-B01		
Rev:	Approved: TYNE	Date: 25-09-19	Copyright MME. No part of this drawing may be copied, disclosed, or made public, in any form, without prior written consent of Materiaal Metingen Europe.		



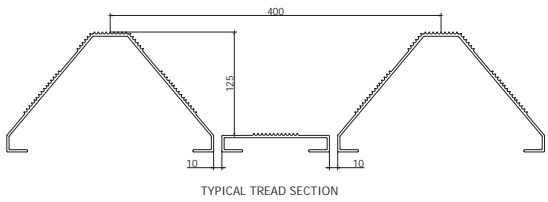
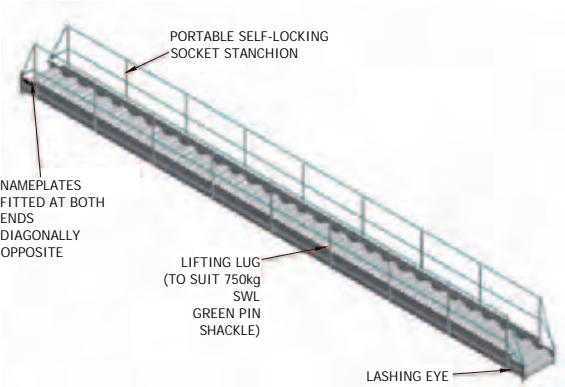
GANGWAYS TYPE APPROVED BY DNV-GL TO ISO 7061
 IN ACCORDANCE WITH IMO MSC.1/CIRC.1331
 TEST LOAD: 5kN/M²
 SWL: 4kN/M²
 WEIGHT: 221kg
 MATERIAL : ALUMINIUM ALLOY 6082 T6
 TO SUIT ANGLES UP TO 50°

- OPTIONAL EXTRAS ON REQUEST
- SAFETY NET
 - LIFTING SLING
 - IN HOUSE TEST CERTIFICATE
 - 3RD PARTY TEST CERTIFICATE
 - REMOVABLE RIGID HANDRAILS

Date:			Cathodic Protection Division Riedelkerstraat 16 P.O. Box 4222 2980 GE Ridderkerk Netherlands Tel: +31 (0)180 48 28 28 E-mail: sales@mme.nl www.mme-group.com		Projection:  Scale: NTS
			Order number:	SALA Gangways (Steep Angle Lightweight Aluminium - 9m)	
Description:	Drawn: ESM	Date: 22-08-19	Project:	Sheet 1/1	
	Checked: RvW	Date: 23-08-19	Dwg: GA.003-04-B01		
Rev:	Approved: TYNE	Date: 25-09-19	Copyright MME. No part of this drawing may be copied, disclosed, or made public, in any form, without prior written consent of Materiaal Metingen Europe.		



A-A: TYPICAL SECTION


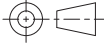


TYPICAL TREAD SECTION

GANGWAYS TYPE APPROVED BY DNV-GL TO ISO 7061
 IN ACCORDANCE WITH IMO MSC.1/CIRC.1331
 TEST LOAD: 5kN/M²
 SWL: 4kN/M²
 WEIGHT: 365kg
 MATERIAL : ALUMINIUM ALLOY 6082 T6
 TO SUIT ANGLES UP TO 50°

OPTIONAL EXTRAS ON REQUEST

- SAFETY NET
- LIFTING SLING
- IN HOUSE TEST CERTIFICATE
- 3RD PARTY TEST CERTIFICATE
- REMOVABLE RIGID HANDRAILS

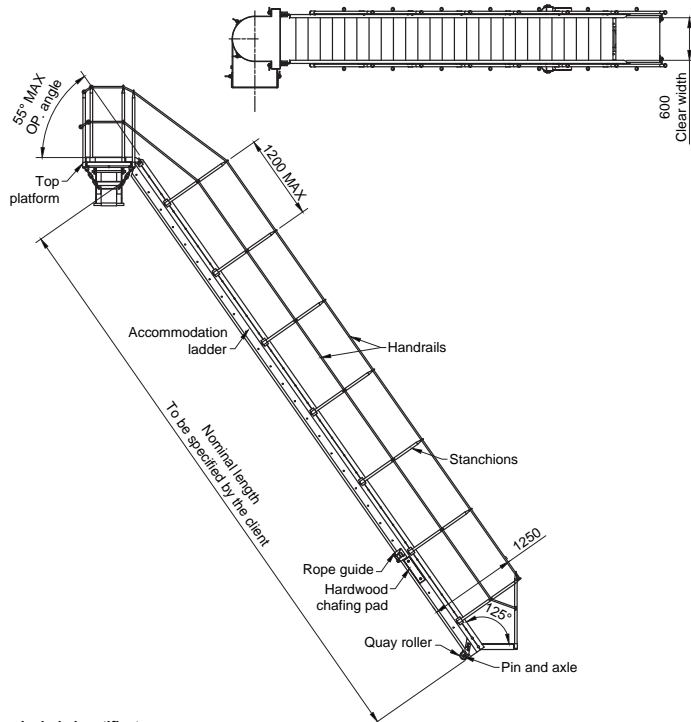
Date:			Cathodic Protection Division Riedelkerstraat 16 P.O. Box 4222 2980 GE Ridderkerk Netherlands Tel: +31 (0)180 48 28 28 E-mail: sales@mme.nl www.mme-group.com		Projection:  Scale: NTS
			Order number:	SALA Gangways (Steep Angle Lightweight Aluminium - 12m)	
Rev. Description:	Drawn: ESM	Date: 22-08-19	Project:	Sheet 1/1	
	Checked: RvW	Date: 23-08-19	Dwg: GA.003-05-B01		
Rev. Description:	Approved: TYNE	Date: 25-09-19	Copyright MME. No part of this drawing may be copied, disclosed, or made public, in any form, without prior written consent of Materiaal Metingen Europe.		



Turntable top platforms

Turntable top platforms

Allows the gangway to rotate from the vessel, reducing floor space or landing areas where there is restricted quay access. The top platforms can also extend out from the vessel reducing stowage.



Included certificates

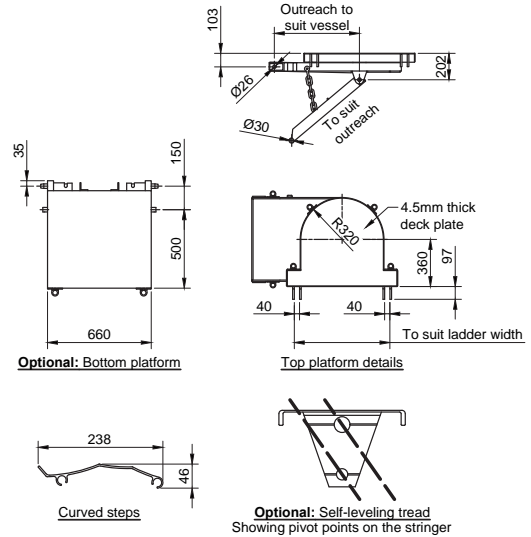
- Accommodation ladders are type approved by DNV-GL to ISO 5488 in accordance with IMO MSC.1/CIRC. 1331
- 3rd party witness load test certificate

Optional accessories

- Boatspar
- Ship side roller
- Flip over bottom platform

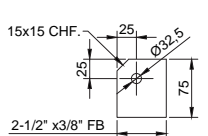
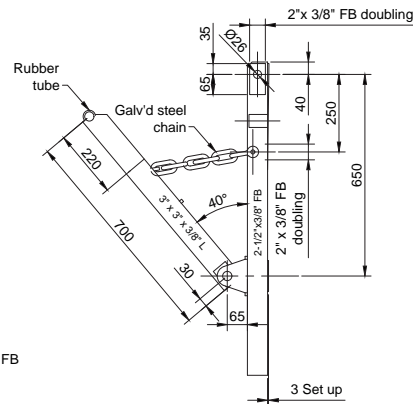
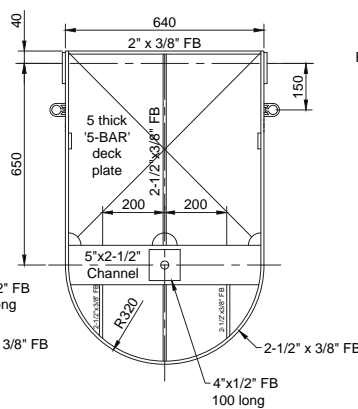
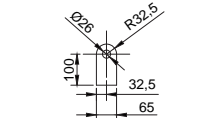
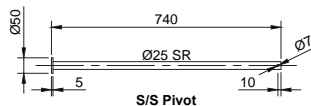
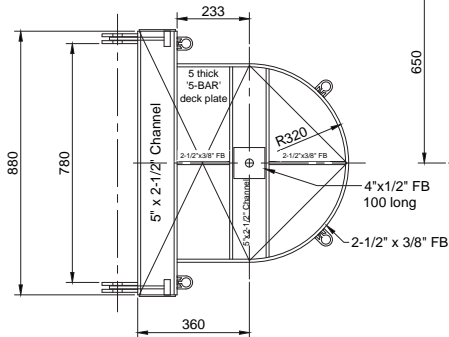
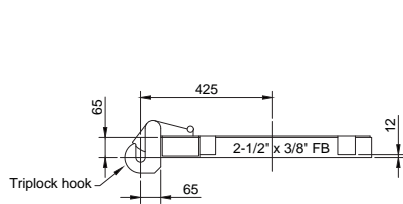
Optional customization

- Folding or fixed handrails
- Self-leveling steps
- Any other modification on request

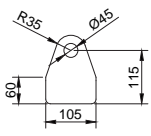


Accommodation ladder	Aluminium alloy 6082-T6
Stanchions	Aluminium alloy 6082-T6
Pins & Axles	Stainless steel 316
Handrails	Polypropylene rope Ø16
Description	Material

Date:			Cathodic Protection Division Rieddekerstraat 16 P.O. Box 4222 2980 GE Ridderkerk Netherlands Tel: +31 (0)180 48 28 28 E-mail: sales@mme.nl www.mme-group.com		Projection:
			Scale: NTS		
Description:	Order number:	Gangway with turn table platform			Sheet 1/1
	Drawn: ESM				
	Checked: RvW	Date: 23-08-19	Dwg: GA.001-03-B01		
Rev.:	Approved: TYNE	Date: 25-09-19	Copyright MME. No part of this drawing may be copied, disclosed, or made public, in any form, without prior written consent of Materiaal Metingen Europe.		




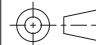
Backstay chain BKT
2 off required

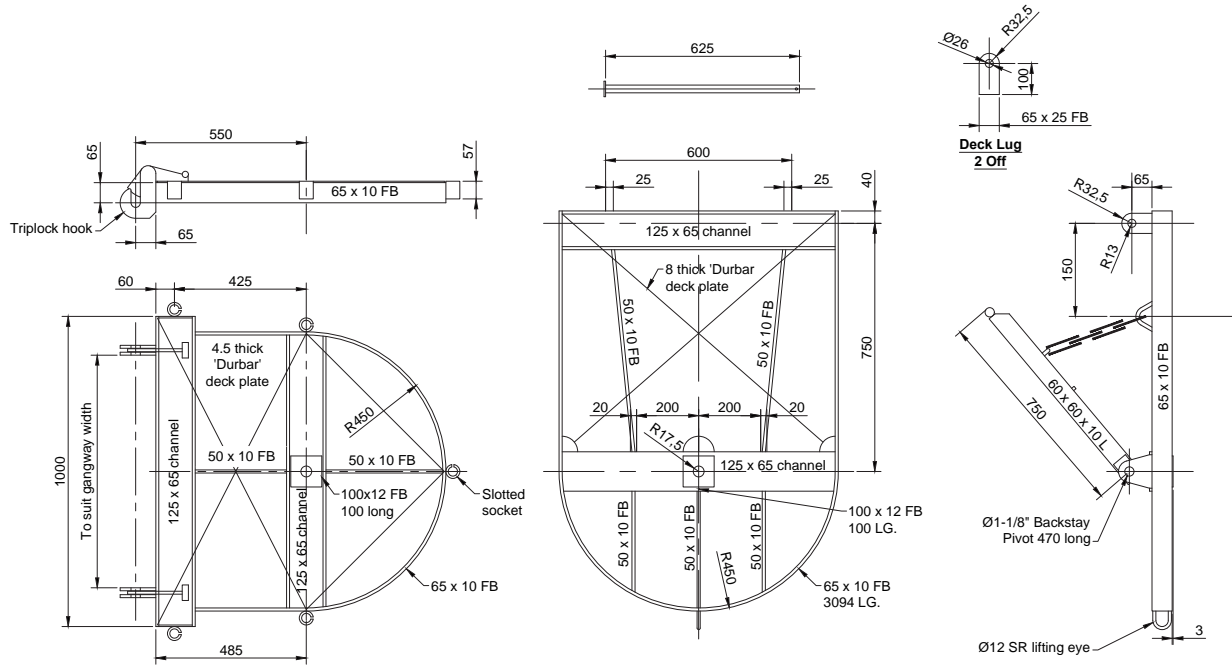


Backstay BKT
2 off required cut
from 6"x1/2" FB

Material:
Aluminium alloy 6082-T6 (unless noted otherwise)

Finish:
- Self-color, cleaned & degreased

Date:			Cathodic Protection Division Rieddekerstraat 16 P.O. Box 4222 2980 GE Ridderkerk Netherlands Tel: +31 (0)180 48 28 28 E-mail: sales@mme.nl www.mme-group.com		Projection: 
			Order number:		Turn Table Top Platform Aluminium Alloy With Triplock Hook
Description:	Drawn: ESM	Date: 31-07-19	Project:	Sheet 1/1	
	Checked: RvW	Date: 23-08-19	Dwg: GA.013-02-B01		
Rev.	Approved: TYNE	Date: 25-09-19	Copyright MME. No part of this drawing may be copied, disclosed, or made public, in any form, without prior written consent of Materiaal Metingen Europe.		



Date:			Catholic Protection Division Riedelkerstraat 16 P.O. Box 4222 2980 GE Ridderkerk Netherlands Tel: +31 (0)180 48 28 28 E-mail: sales@mme.nl www.mme-group.com	Projection:  Scale: NTS
Description:	Drawn: ESM Checked: RvW	Date: 31-07-19 Date: 23-08-19	Project: Dwg: GA.013-01-B01	Sheet 1/1
Rev:	Approved: TYNE	Date: 25-09-19	Copyright MME. No part of this drawing may be copied, disclosed, or made public, in any form, without prior written consent of Materiaal Metingen Europe.	



Bulwark Ladders

Bulwark Ladders

Bulwark ladders are used in conjunction with a gangway for access from the top of the bulwark to deck level.

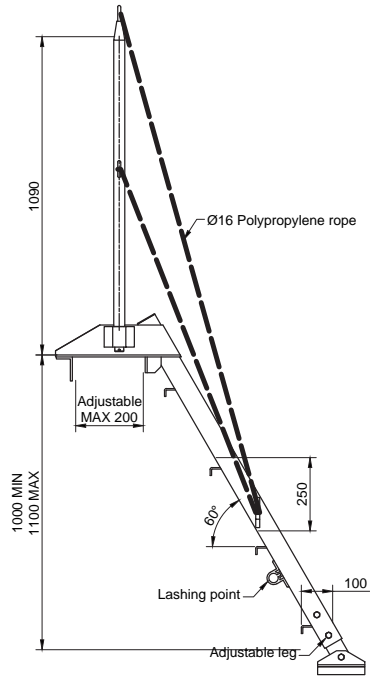
Standard supply:

- Manufactured from Marine Grade Lightweight Aluminium 6082 T6
- Clear width to suit customer/gangway requirement
- Manufactured to ease ship access heights
- Vessel hooks for securing
- Anti-slip surface
- Lifting lugs
- Adjustable height
- Adjustable hook

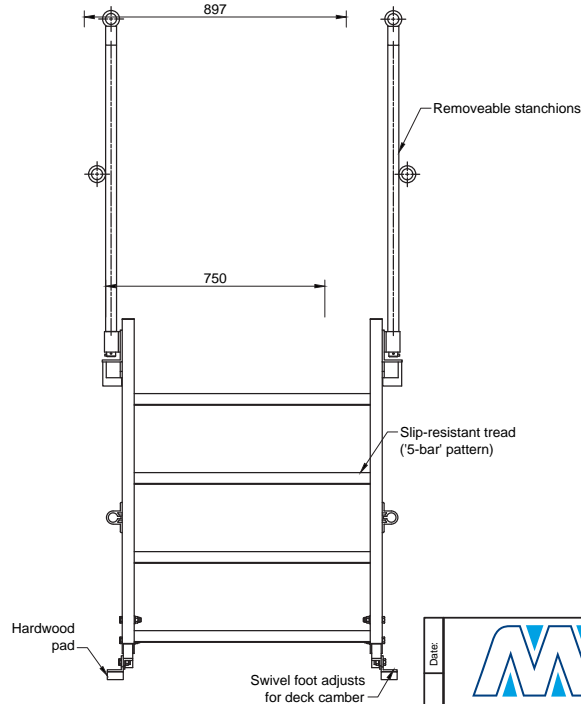
Optional extra's on request:

- Folding bulwark
- Jack up wheels for ease of movement
- Lug & pin connection to gangway for small landing areas

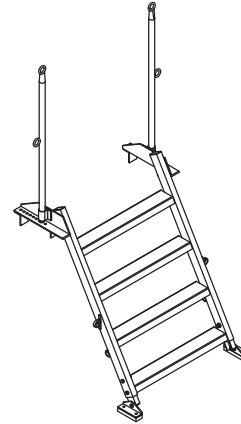
Side view



Front view


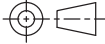


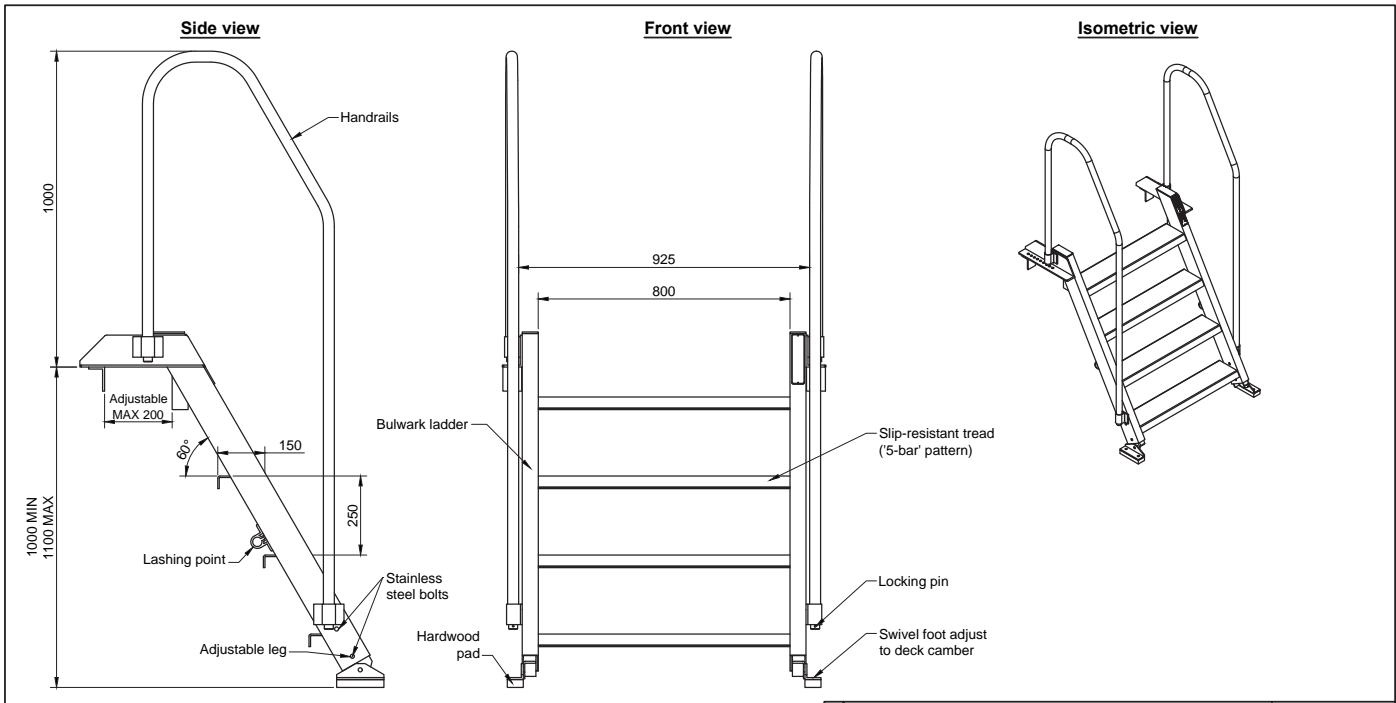
Isometric view




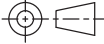
Harbinger gangway specifications:

- Weight of Bulwark ladder - 18 Kg
- Bulwark ladder are made from aluminium alloy 6082-T6
- Stanchions are made from aluminium alloy 6082-T6
- Rope is Ø16 mm polypropylene

Date:			Catholic Protection Division Rieddekerstraat 16 P.O. Box 4222 2980 GE Ridderkerk Netherlands Tel: +31 (0)180 48 28 28 E-mail: sales@mme.nl www.mme-group.com	Projection: 
Order number:		Bulwark Ladder Gangways		
Description:	Drawn: ESM	Date: 29-04-19	Project:	Sheet 1/1
	Checked: RvW	Date: 28-05-19	Dwg: GA.005-02-B01	
Rev:	Approved: PP	Date: 28-05-19	Copyright MME. No part of this drawing may be copied, disclosed, or made public, in any form, without prior written consent of Materiaal Metingen Europe.	



- Harbinger gangway specifications:**
- Weight of SIS7 Bulwark ladder - 28 Kg
 - Bulwark ladder are made from aluminium alloy 6082-T6
 - Handrails are made from aluminium alloy 6082-T6

Date:			Catholic Protection Division Rieddekerstraat 16 P.O. Box 4222 2980 GE Ridderkerk Netherlands Tel: +31 (0)180 48 28 28 E-mail: sales@mme.nl www.mme-group.com	Projection: 
Order number:		SIS7 Bulwark Ladder Gangways		
Description:	Drawn: ESM	Date: 29-04-19	Project:	Sheet 1/1
	Checked: RvW	Date: 28-05-19	Dwg: GA.005-01-B01	
Rev:	Approved: PP	Date: 28-05-19	Copyright MME. No part of this drawing may be copied, disclosed, or made public, in any form, without prior written consent of Materiaal Metingen Europe.	



Shore Gangways

Shore Gangways

Long range, steep 0-50 degrees working angle aluminium gangways for easy ship-shore access with standard ship hook and jetty roller.

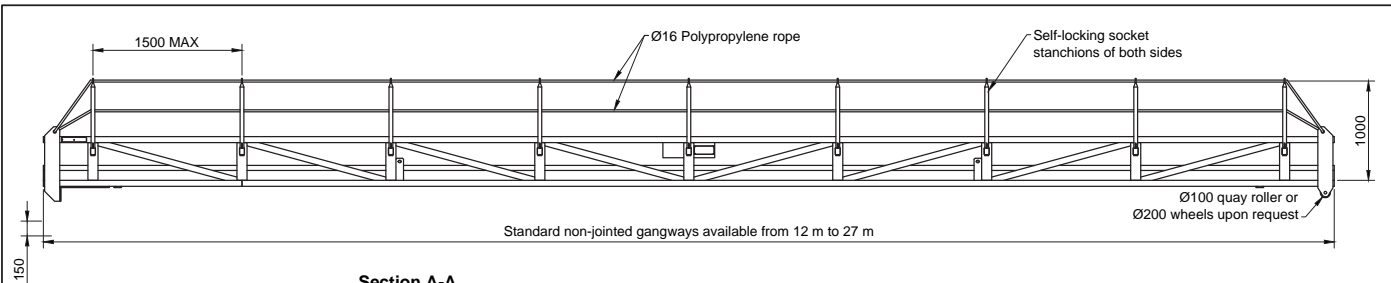
Standard supply:

- Manufactured from Marine Grade Lightweight Aluminium 6082 T6
- Clear width to suit customer/gangway requirement
- Manufactured to ease ship access heights
- Anti-slip surface
- Standard ship hook & quay roller
- Self-locking stanchions and polypropylene rope hand rail & half-height
- Lifting & lashing lugs

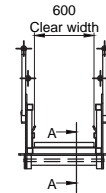
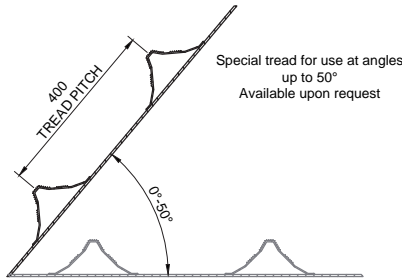
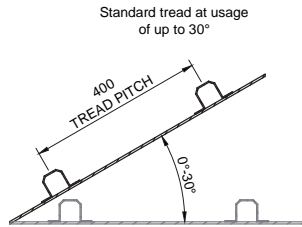
Optional extra's on request:

- Safety net
- Lifting sling
- In house test certificate
- 3rd party test certificate
- Removable rigid handrails

Product Specifications	
Length (m)	Weight (Kg)
12	325
13	475
14	550
15	650
16	700
17	750
18	800
19	850
20	900
25	1300
26	1400
27	1550



Section A-A



Harbinger gangway specifications:

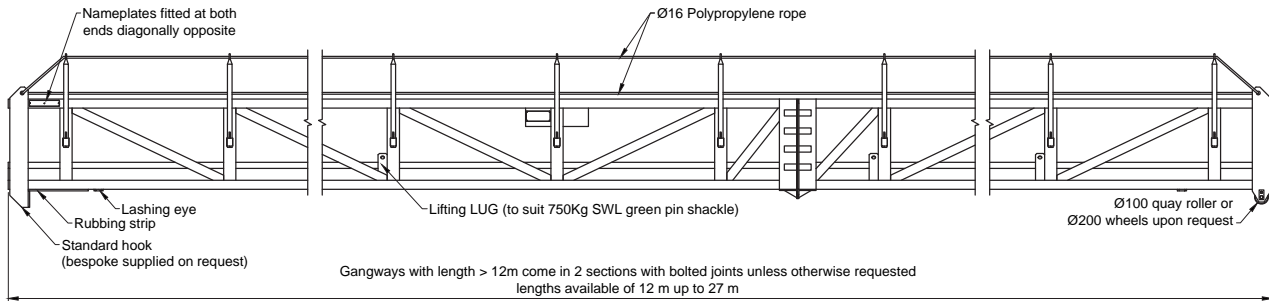
- Gangways are type approved by DNV-GL to ISO 7061 in accordance with IMO MSC.1/CIRC. 1331
- Gangways are made from aluminium alloy 6082-T6
- Stanchions are made from aluminium alloy 6082-T6
- Pins and axles are made from stainless steel 316
- Rope is Ø16 mm polypropylene

PRODUCT SPECIFICATIONS			
Length (m)	Weight (Kg)	Length (m)	Weight (Kg)
12	325	19	850
13	475	20	900
14	550	25	1300
15	650	25,5	1350
16	700	26	1400
17	750	27	1550
18	800		

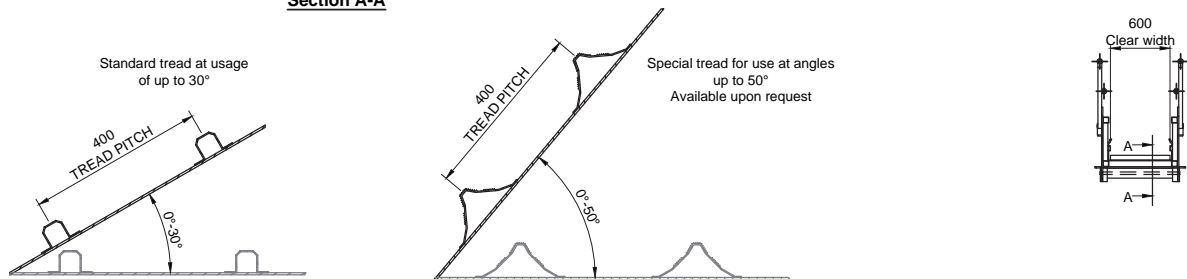
Optional extra's on request

- Safety net
- Lifting sling
- In house test certificate
- 3rd party test certificate
- Removable rigid handrails

Date:			Cathodic Protection Division Rieddekerstraat 16 P.O. Box 4222 2980 GE Ridderkerk Netherlands Tel: +31 (0)180 48 28 28 E-mail: sales@mme.nl www.mme-group.com	Projection: 
Order number:		Shore Gangways Standard Non-Jointed Gangways		
Description:	Drawn: ESM	Date: 29-04-19	Project:	Sheet 1/1
	Checked: RvW	Date: 28-05-19	Dwg: GA.004-01-B01	
Rev:	Approved: PP	Date: 28-05-19	Copyright MME. No part of this drawing may be copied, disclosed, or made public, in any form, without prior written consent of Materiaal Meetingen Europe.	



Section A-A



PRODUCT SPECIFICATIONS

Length (m)	Weight (Kg)	Length (m)	Weight (Kg)
12	325	19	850
13	475	20	900
14	550	25	1300
15	650	25,5	1350
16	700	26	1400
17	750	27	1550
18	800		

Harbinger gangway specifications:

- Gangways are type approved by DNV-GL to ISO 7061 in accordance with IMO MSC.1/CIRC. 1331
- Gangways are made from aluminium alloy 6082-T6
- Stanchions are made from aluminium alloy 6082-T6
- Pins and axles are made from stainless steel 316
- Rope is Ø16 mm polypropylene

Optional extra's on request

- Safety net
- Lifting sling
- In house test certificate
- 3rd party test certificate
- Removable rigid handrails

Date:			Cathodic Protection Division Riedelkerstraat 16 P.O. Box 4222 2980 GE Ridderkerk Netherlands Tel: +31 (0)180 48 28 28 E-mail: sales@mme.nl www.mme-group.com		Projection:
			Scale: NTS		
Description:	Order number:		Shore Gangways 2 Sections With Bolted Joints		
	Drawn: ESM	Date: 29-04-19	Project:	Sheet 1/1	
Rev.:	Checked: RvW	Date: 28-05-19	Dwg: GA.004-02-B01		
	Approved: PP	Date: 28-05-19	Copyright MME. No part of this drawing may be copied, disclosed, or made public, in any form, without prior written consent of Materiaal Meetingen Europe.		



**Onshore & Offshore
Overhead Braced Gangways**

Onshore & Offshore Overhead Braced Gangways & Bridges

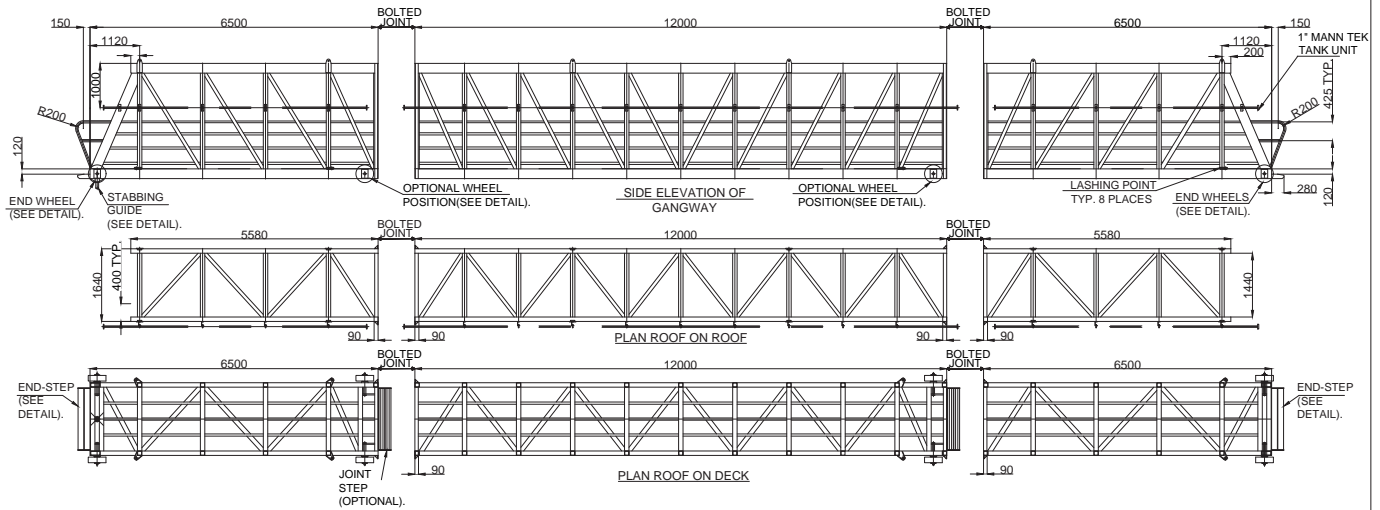
Overhead braced structure providing complete security between two points. Up to 50m in length, available in customer specified length and width.

Standard supply:

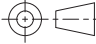
- Manufactured from Marine Grade Lightweight Aluminium 6082 T6
- Clear width to suit customer/gangway requirement
- Overhead braced structure
- Anti-slip surface for maximum 10 degrees operating angle
- Fixed handrail with half-height
- Quay roller for tidal pontoon movement
- Lifting points for installation

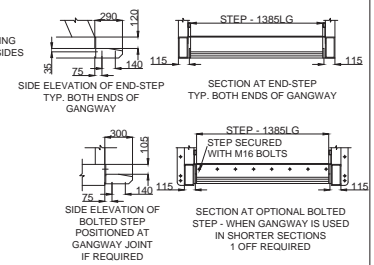
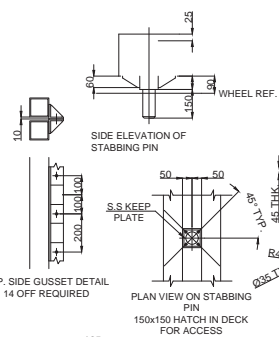
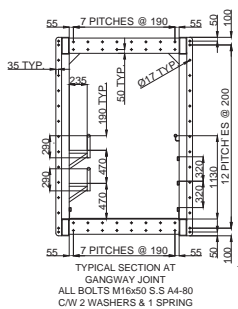
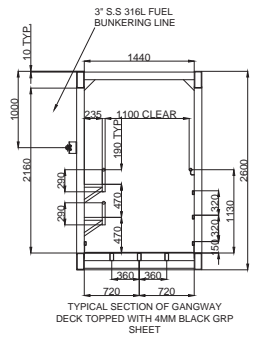
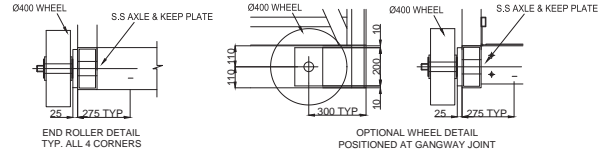
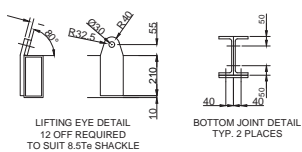
Optional extra's on request:

- Bespoke tower/platform with access steps
- Bearing pads (fixed and moving)
- Customer specific foundation connections
- Lightning, sprinkler system provisions for customer pipework, services, etc.
- Safety gates & RFID detection

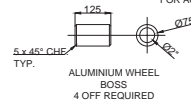
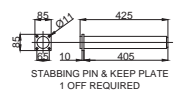


55

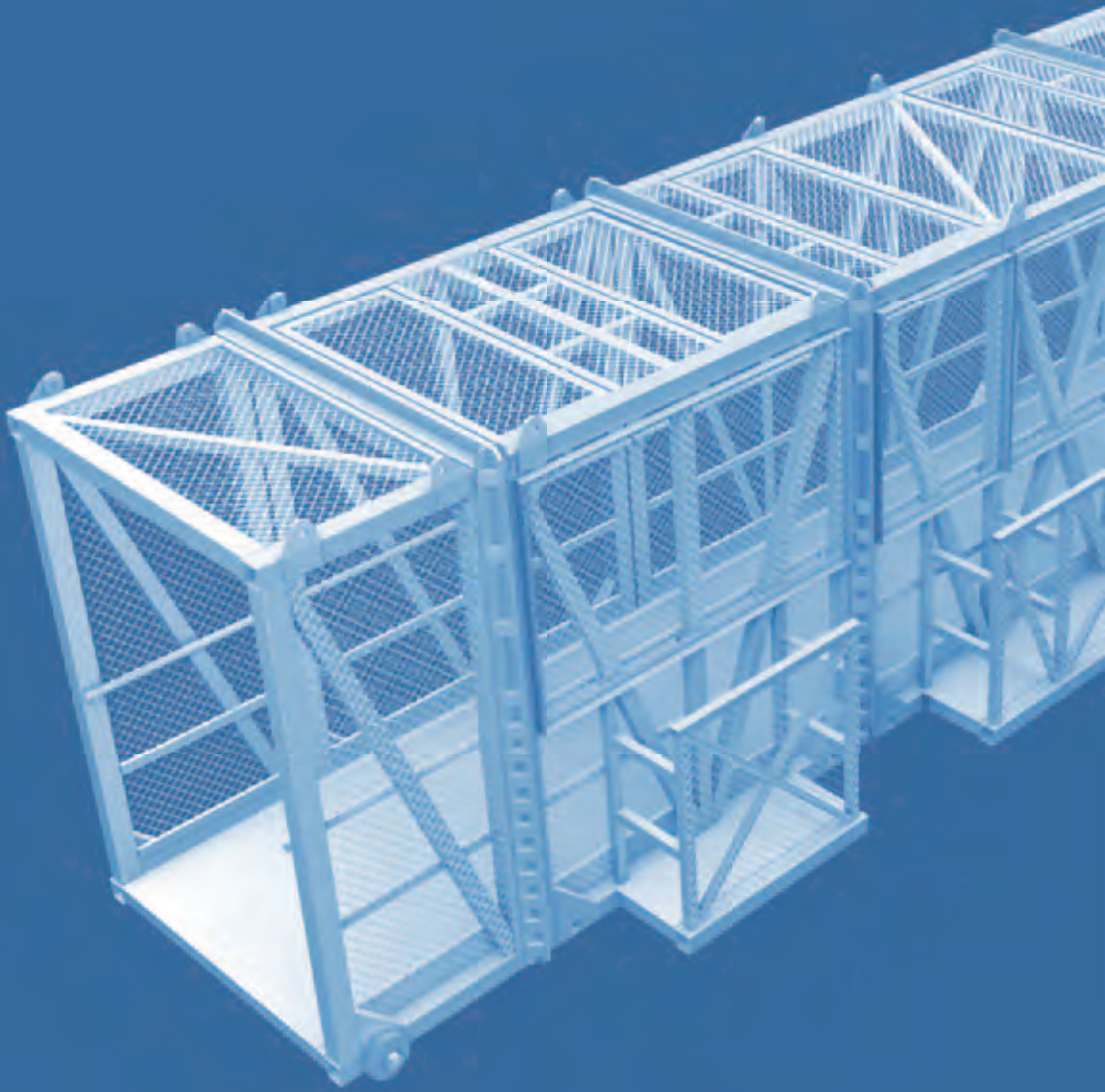
Date:			Cathodic Protection Division Rietdekkerstraat 16 P.O. Box 4222 2980 GE Ridderkerk Netherlands Tel: +31 (0)180 48 28 28 E-mail: sales@mme.nl www.mme-group.com		Projection: 
			Order number:		Overhead braced Gangway
Description:	Drawn: ESM	Date: 19-08-19	Project:	Sheet 1/2	
	Checked: RvW	Date: 23-08-19	Dwg: GA.012-01-B01		
Rev.	Approved: TYNE	Date: 25-09-19	Copyright MME. No part of this drawing may be copied, disclosed, or made public, in any form, without prior written consent of Materiaal Metingen Europe.		



ALL ALUMINIUM 6062-T6 UNLESS NOTED OTHERWISE
DECKPLATE GRADE 5083-0 - TOPPED WITH 4MM
BLACK GRP SHEET
GANGWAY DESIGN LOAD 5kNm²
GANGWAY SAFE WORKING LOAD - 2.5kNm²
WEIGHT: APPROX. 4800KG



Date:			Cathodic Protection Division Rietdekkerstraat 16 P.O. Box 4222 2980 GE Ridderkerk Netherlands Tel: +31 (0)180 48 28 28 E-mail: sales@mme.nl www.mme-group.com		Projection:
			Order number: Overhead braced Gangway		Scale: NTS
Description:	Drawn: ESM	Date: 19-08-19	Project:	Sheet 2/2	
	Checked: RvW	Date: 23-08-19	Dwg: GA.012-01-B01		
Rev.	Approved: TYNE	Date: 25-09-19	Copyright MME. No part of this drawing may be copied, disclosed, or made public, in any form, without prior written consent of Materiaal Metingen Europe.		



Modular Gangways

Modular Gangways

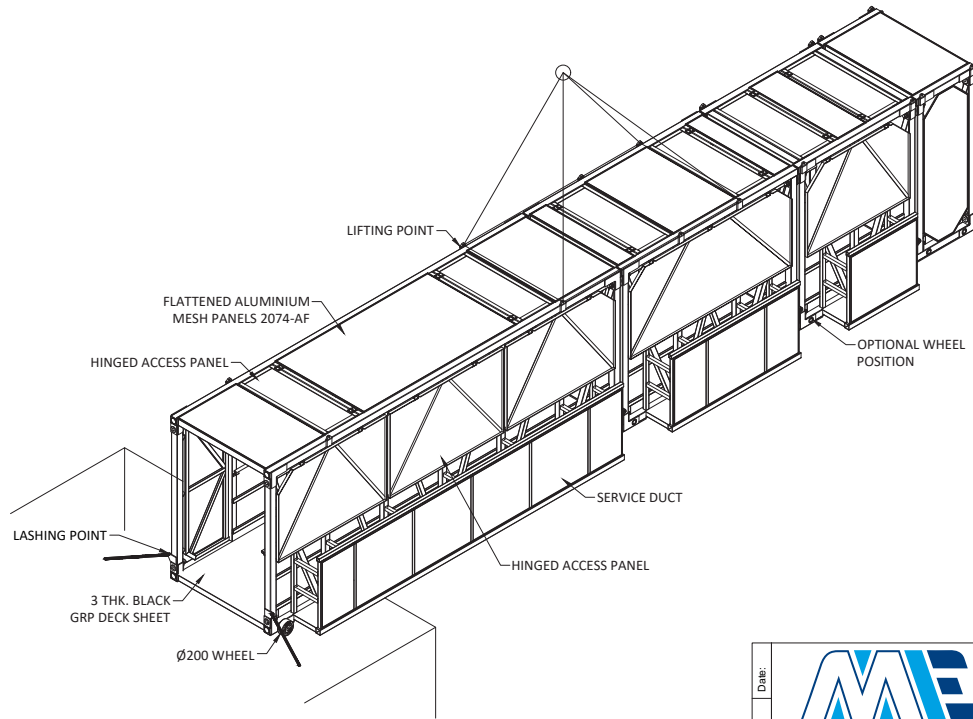
Custom designed gangways with facility for services support and lighting to bridge customer required length maximum 10 degree working angle. 4 point fixed or multi-bolt flange connection.

Standard supply:


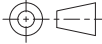
- Manufactured from Marine Grade Lightweight Aluminium 6082 T6
- Clear width to suit customer/gangway requirement
- Optional lengths to suit customer requirement
- 4 Point fixed or multi-bolt flange connection
- Anti-slip surface for maximum 10 degrees operating angle
- Fixed handrail with half-height
- Multi-position wheels
- Underside wear pads for gangway protection
- Lifting points for installation and assembly

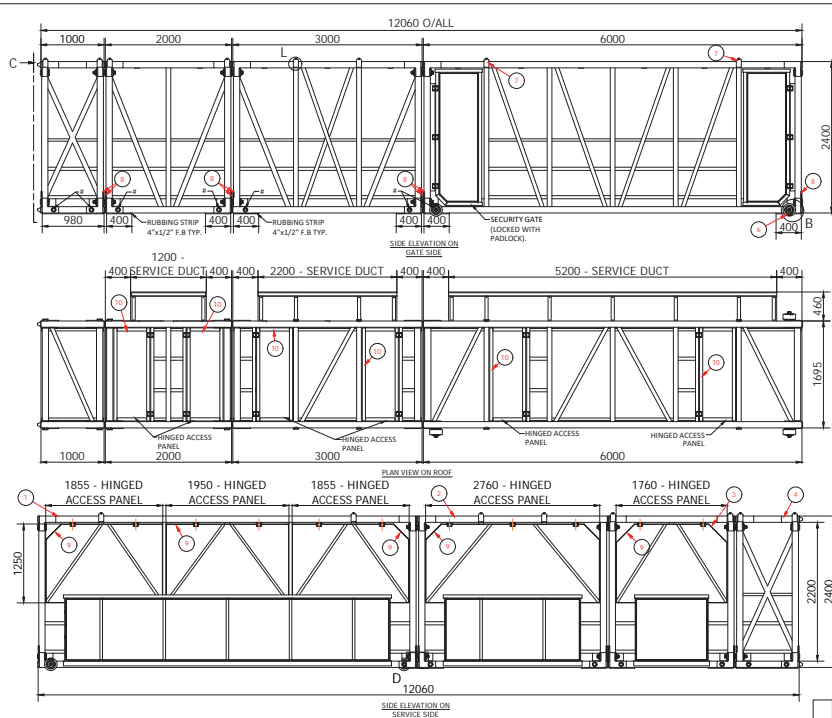
Optional extra's on request:

- Provision for external services storage with access panels
- Customer specific foundation connections
- Lightning, sprinkler system provisions for customer pipework, services, etc.
- Safety gates & RFID detection
- Multi-access gates




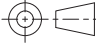
ISOMETRIC VIEW OF GANGWAY

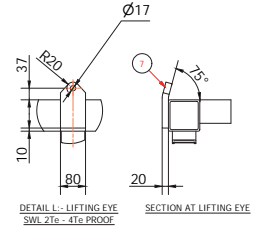
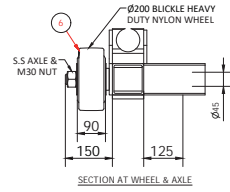
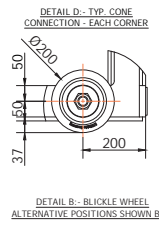
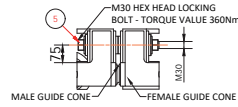
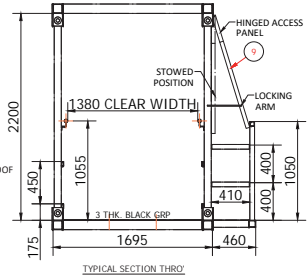
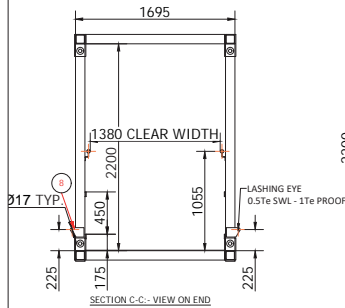
Date:			Catholic Protection Division Rieldekkerstraat 16 P.O. Box 4222 2980 GE Ridderkerk Netherlands Tel: +31 (0)180 48 28 28 E-mail: sales@mme.nl www.mme-group.com		Projection: 
			Order number:		Modular Gangway
Description:	Drawn: ESM	Date: 19-08-19	Project:		Sheet 1/3
	Checked: RvW	Date: 23-08-19	Dwg: GA.007-01-B01		
Rev.	Approved: TYNE	Date: 25-09-19	Copyright MME. No part of this drawing may be copied, disclosed, or made public, in any form, without prior written consent of Materiaal Metingen Europe.		




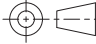
ALL MATERIAL ALUMINIUM 6082-T6 UNLESS NOTED OTHERWISE
 DECKPLATE GRADE 5083-0
 FLATTENED ALUMINIUM MESH GRADE 2074-AF
 FASTENERS + AXLES STAINLESS STEEL GRADE 316L
 WEIGHT:- 2365KG

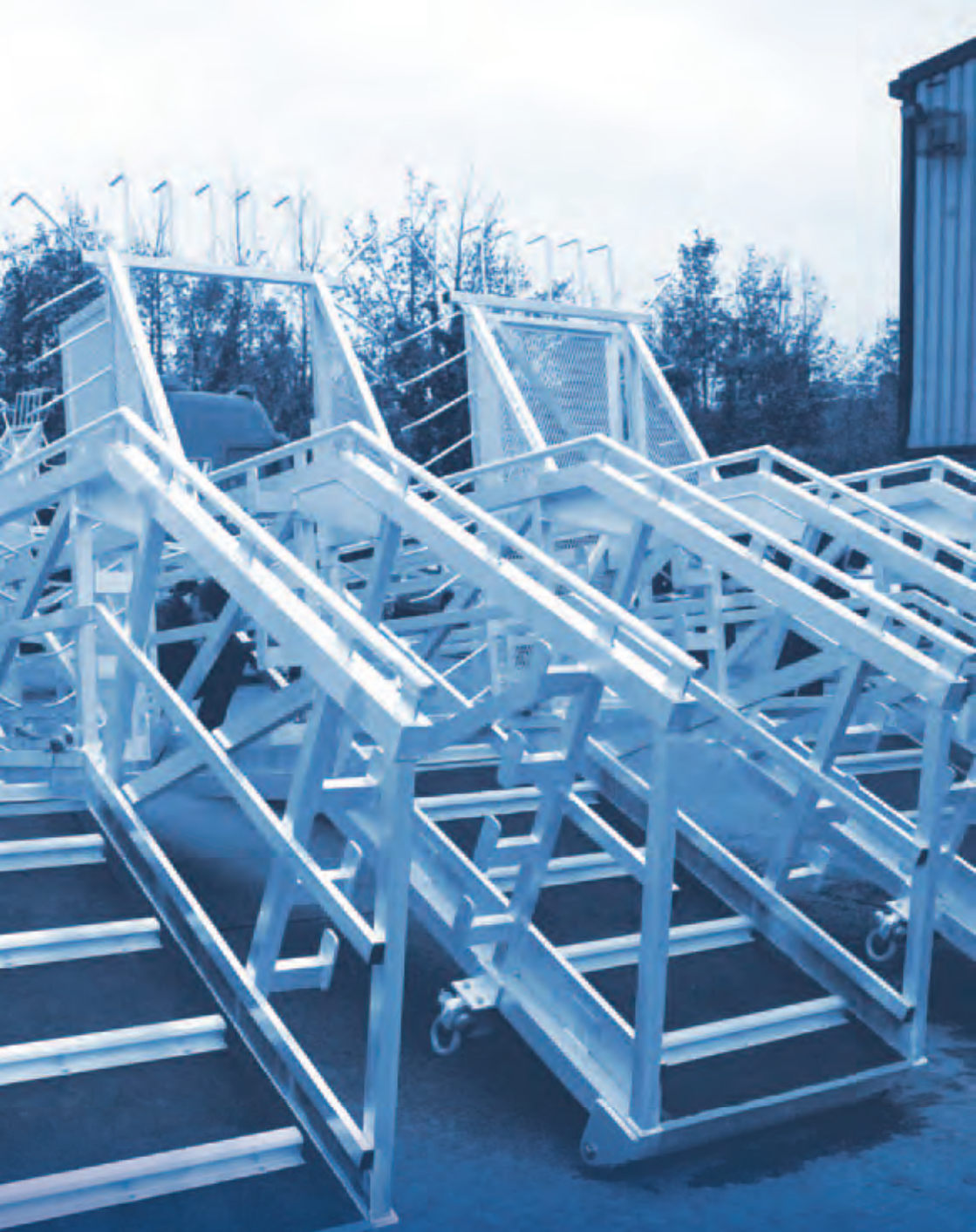
MODULAR GANGWAY - PARTS LIST			
ITEM	QTY	DESCRIPTION	MATERIAL
10	6	HINGED ACCESS PANEL ROOF	ALUMINIUM 6082-T6
9	5	HINGED ACCESS PANEL SIDE	ALUMINIUM 6082-T6
8	16	LASHING EYE 0.5Te SWL	ALUMINIUM 6082-T6
7	16	LIFTING EYE 2Te SWL	ALUMINIUM 6082-T6
6	2	BLICKLE 200 DIA. WHEEL	HEAVY DUTY NYLON
5	12	CONNECTION BOLT M30	ALUMINIUM 6082-T6
4	1	1M GANGWAY SECTION	ALUMINIUM 6082-T6
3	1	2M GANGWAY SECTION	ALUMINIUM 6082-T6
2	1	3M GANGWAY SECTION	ALUMINIUM 6082-T6
1	1	6M GANGWAY SECTION	ALUMINIUM 6082-T6

Date:			Cathodic Protection Division Riedelkruisstraat 16 P.O. Box 4222 2980 GE Ridderkerk Netherlands Tel: +31 (0)180 48 28 28 E-mail: sales@mme.nl www.mme-group.com		Projection:  Scale: NTS
			Order number:	Modular Gangway	
Description:	Drawn: ESM	Date: 19-08-19	Project:	Sheet 2/3	
	Checked: RvW	Date: 23-08-19	Dwg: GA.007-01-B01		
Rev.	Approved: TYNE	Date: 25-09-19	Copyright MME. No part of this drawing may be copied, disclosed, or made public, in any form, without prior written consent of Materiaal Metingen Europe.		



DETAIL B: - BLICKLE WHEEL ALTERNATIVE POSITIONS SHOWN BY #

Date:				Cathodic Protection Division Riedtdekerstraat 16 P.O. Box 4222 2980 GE Ridderkerk Netherlands Tel: +31 (0)180 48 28 28 E-mail: sales@mme.nl www.mme-group.com		Projection: 
				Scale: NTS		
Order number:	Modular Gangway					
Description:	Drawn: ESM	Date: 19-08-19	Project:	Sheet 3/3		
	Checked: RvW	Date: 23-08-19	Dwg: GA.007-01-B01			
Rev:	Approved: TYNE	Date: 25-09-19	Copyright MME. No part of this drawing may be copied, disclosed, or made public, in any form, without prior written consent of Materiaal Metingen Europe.			



Naval Brows

Naval Brows

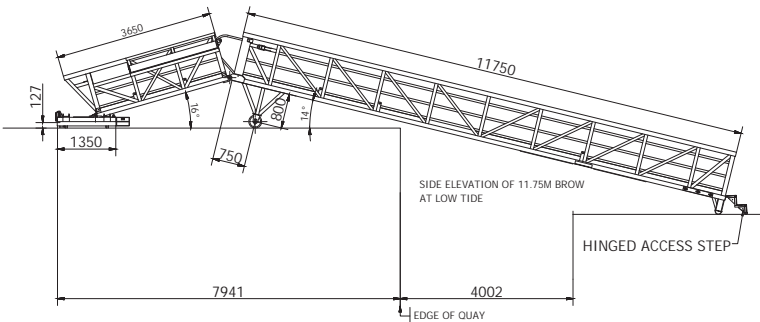
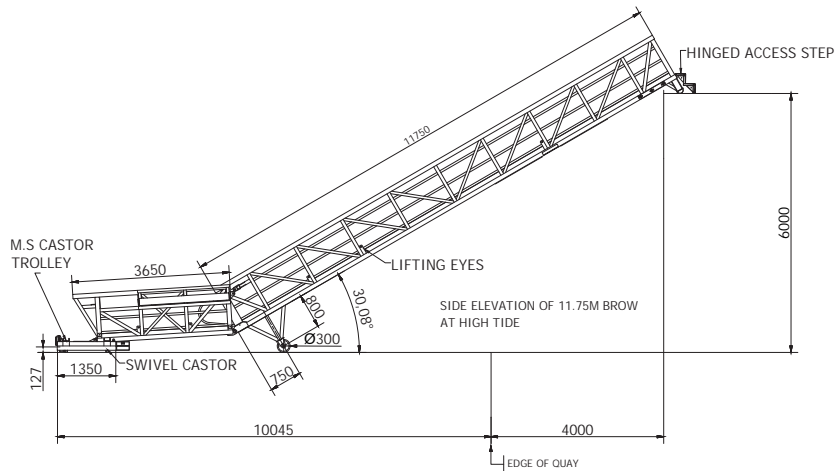
Lightweight aluminium gangways with cranked/hinge section for access to ships below the quay. 0-50 degrees working angle.

Standard supply:

- Manufactured from Marine Grade Lightweight Aluminium 6082 T6
- Clear width to suit customer/gangway requirement
- Optional lengths to suit customer requirement
- Anti-slip surface
- Ship hook & quay roller
- Fixed handrail with half-height
- Lifting & lashing lugs

Optional extra's on request:

- Self-levelling tread
- Electric/hydraulic raising & lowering
- Fixed/ adjustable crank options
- Platforms & stairs for vessel access
- Quay roller options to suit site availability (wheels, trolley, bespoke, etc.)
- Rubber fender pads
- Mesh/sheet side panels
- Lighting, sprinkler system provisions for customer pipework, services, etc.
- Safety gates & RFID detection



Material:


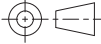
- All aluminium extrusions 6082-T6 (unless noted otherwise)
- All deck plate to be grade 5083-0 (unless noted otherwise)
- All extrusions M.S grade S355 (unless noted otherwise)
- All deck plate to be grade S275 (unless noted otherwise)

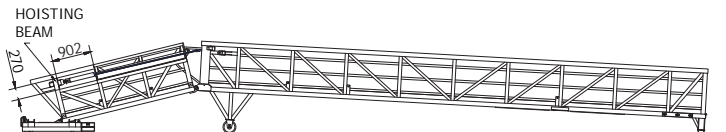
Finish:

- Aluminium: washed & degreased
- Deck plate topped with 3mm black grit GRP sheet
- Mild steel: TG4 high-build

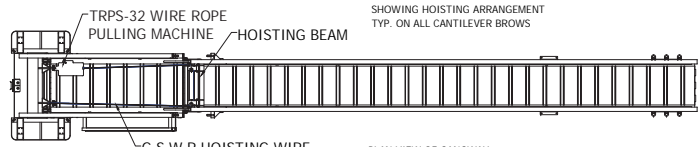
TG4 paint specification

- Grit blast SA-2-1/2
- 1 coat of 2 pack epoxy zinc rich primer @ 50um dft
- 1 coat of 2 pack acrylic polyurethane finish @ 50um dft

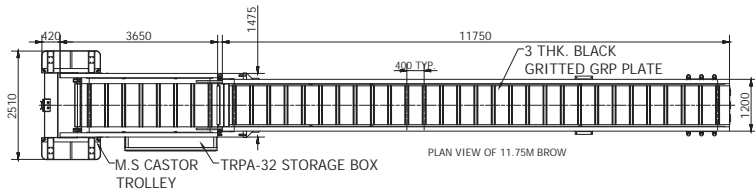
Date:			Cathodic Protection Division Riedelkerstraat 16 P.O. Box 4222 2980 GE Ridderkerk Netherlands Tel: +31 (0)180 48 28 28 E-mail: sales@mme.nl www.mme-group.com		Projection:  Scale: NTS
			Order number: Naval Brows Gangway		
Description:	Drawn: ESM	Date: 31-07-19	Project:		Sheet 1/2
	Checked: RvW	Date: 23-08-19	Dwg: GA.011-01-B01		
Rev:	Approved: TYNE	Date: 25-09-19	Copyright MME. No part of this drawing may be copied, disclosed, or made public, in any form, without prior written consent of Materiaal Metingen Europe.		



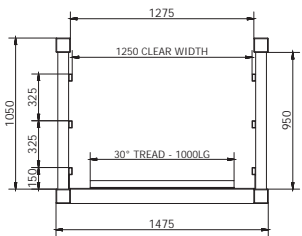
SIDE ELEVATION OF GANGWAY
SHOWING HOISTING ARRANGEMENT
TYP. ON ALL CANTILEVER BROWS



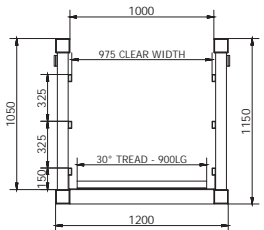
PLAN VIEW OF GANGWAY
SHOWING HOISTING ARRANGEMENT
TYP. ON ALL CANTILEVER BROWS



PLAN VIEW OF 11.75M BROW




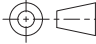

TYPICAL SECTION OF LOWER GANGWAY



TYPICAL SECTION OF 11.75M BROW

~|

65

Rev.	Date:			Cathodic Protection Division Riedelkerstraat 16 P.O. Box 4222 2980 GE Ridderkerk Netherlands Tel: +31 (0)180 48 28 28 E-mail: sales@mme.nl www.mme-group.com		Projection: 
				Scale: NTS		
Order number:		Naval Brows Gangway				
Description:		Drawn: ESM Date: 31-07-19 Project:			Sheet 2/2	
		Checked: RvW Date: 23-08-19 Dwg: GA.011-01-B01				
		Approved: TYNE Date: 25-09-19	Copyright MME. No part of this drawing may be copied, disclosed, or made public, in any form, without prior written consent of Materiaal Metingen Europe.			

Custom gangway systems

- Telescopic Gangways & Wind Turbine Access
- Self-levelling Stepped Gangways (Cruise Access)
- Pontoon Access Gangways
- Marine Column & Tower Gangways
- Other bespoke gangway systems



Telecopic Gangways & Wind Turbine Access

Telescopic Gangways & Wind Turbine Access

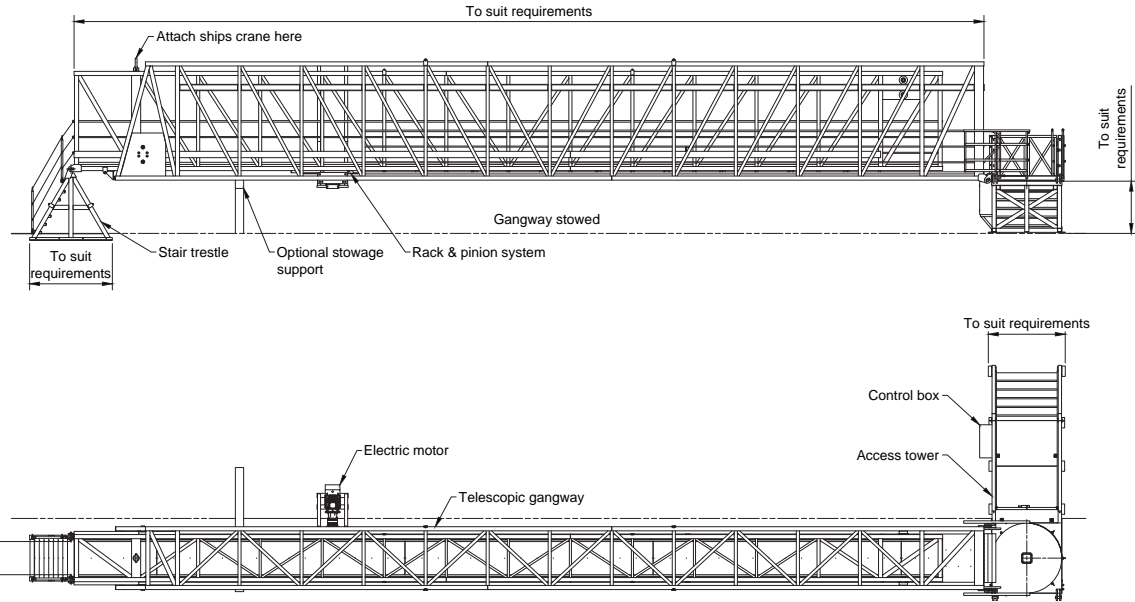
Aluminium lightweight gangways designed for variable length applications in offshore (wind) industries. 600 mm clear width and 0-50 degree working angle. Steel foundation tower for access from the vessel.

Standard supply:

- Manufactured from Marine Grade Lightweight Aluminium 6082 T6
- 600mm Clear width
- Optional lengths to suit customer requirement
- Anti-slip surface
- Fixed handrail with half-height
- Steel foundation connection tower for access from vessel
- Lifting points for installation
- Crane deployment connection hook

Optional extra's on request:

- Customer specific foundation connections
- Electric, hydraulic or winch driven options
- Stowage post for vessel storage



- Gangway designed to ST-0358 "Type 4"
- Design load: 600 kg
- Safe working load: 300 kg

Angle of use

- Flat anti-slip grip deck: +15° to -15°
- Anti-slip deck & 30° treads: +30° to -30°
- Anti-slip deck & 50° treads: +50° to -50°

Telescopic gangway	Aluminium alloy 6082-T6 (unless noted otherwise)
Trestle	Aluminium alloy 6082-T6 (unless noted otherwise)
Access	Mild steel (unless noted otherwise)
Description	Material

Date:			Cathodic Protection Division		
			Riedelkerstraat 16 P.O. Box 4222 2980 GE Ridderkerk Netherlands Tel: +31 (0)180 48 28 28 E-mail: sales@mme.nl www.mme-group.com		
Rev. Description:	Order number:		Telescopic & Wind Turbine Access Gangway		
	Drawn: ESM	Date: 31-07-19	Project:		Sheet 1/1
	Checked: RvW	Date: 23-08-19	Dwg: GA.008-01-B01		
Approved: TYNE	Date: 25-09-19	Copyright MME. No part of this drawing may be copied, disclosed, or made public, in any form, without prior written consent of Materiaal Metingen Europe. 			

Projection:

Scale: NTS



Self-levelling Stepped Gangways (cruise access)

Self-levelling Stepped Gangways (Cruise Access)

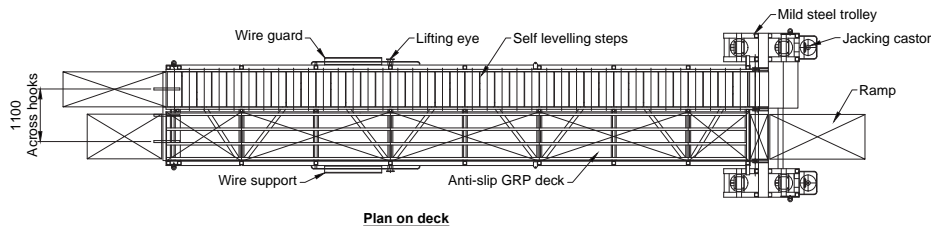
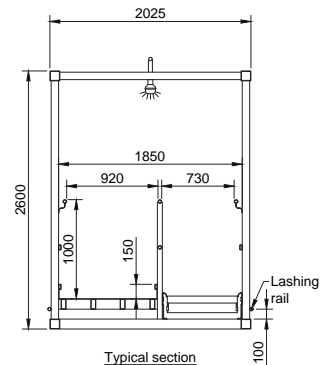
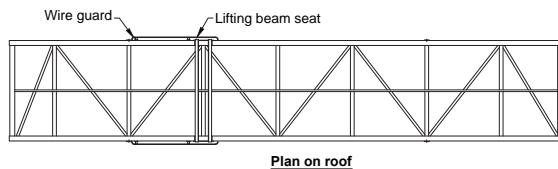
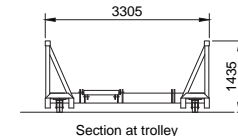
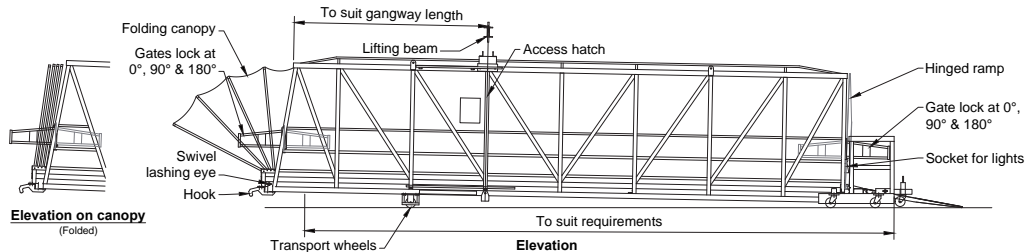
Custom design, aluminium gangway. 0-50 degrees working angle with length and width to suit customer requirements. Self-levelling tread steps to maintain horizontal level.

Standard supply:

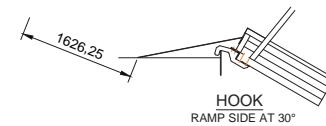
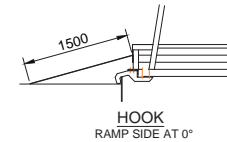
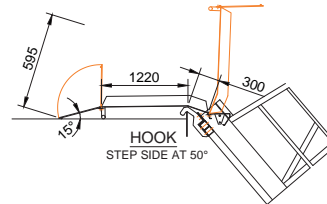
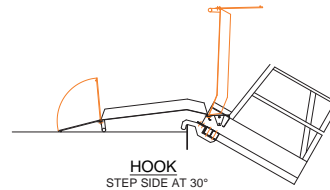
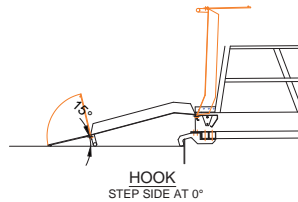
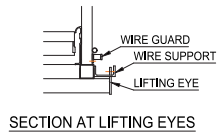
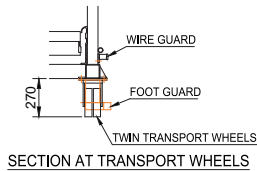
- Manufactured from Marine Grade Lightweight Aluminium 6082 T6
- Clear width to fit customer requirement
- Length to suit customer requirement
- Self-levelling tread step to maintain horizontal level
- Anti-slip surface
- Mild steel quay trolley for access & ship hook
- Fixed handrails with half-height
- Lifting lugs

Optional extra's on request:

- Disabled access ramps
- Ship hook connection to suit customer vessel
- Weather protection cover along entire length of gangway
- Customer specific printed weather protection
- Turntable top platform for vessel connection and minimal quay landing restraints
- Inclometers
- Platform towers for height restricted applications
- Automatic – hydraulic deployed systems



Date:			Catholic Protection Division Rieddekerstraat 16 P.O. Box 4222 2980 GE Ridderkerk Netherlands Tel: +31 (0)180 48 28 28 E-mail: sales@mme.nl www.mme-group.com		Projection: 
			Order number: Self-Levelling Stepped Gangway Cruise Access		Scale: NTS
Description:	Drawn: ESM Date: 31-07-19 Project:	Dwg: GA.009-01-B01		Sheet 1/2	
	Checked: RvW Date: 23-08-19	Approved: TYNE Date: 25-09-19			
Rev.	Copyright MME. No part of this drawing may be copied, disclosed, or made public, in any form, without prior written consent of Materiaal Metingen Europe.				1/5



Date:			Catholic Protection Division Riedelkerstraat 16 P.O. Box 4222 2980 GE Ridderkerk Netherlands Tel: +31 (0)180 48 28 28 E-mail: sales@mme.nl www.mme-group.com	Projection: 
Order number:		Self-Levelling Stepped Gangway Cruise Access		
Description:	Drawn: ESM	Date: 31-07-19	Project:	Sheet 2/2
	Checked: RvW	Date: 23-08-19	Dwg: GA.009-01-B01	
Rev.	Approved: TYNE	Date: 25-09-19	Copyright MME. No part of this drawing may be copied, disclosed, or made public, in any form, without prior written consent of Materiaal Metingen Europe. 	



Pontoon Access Gangways

Pontoon Access Gangways

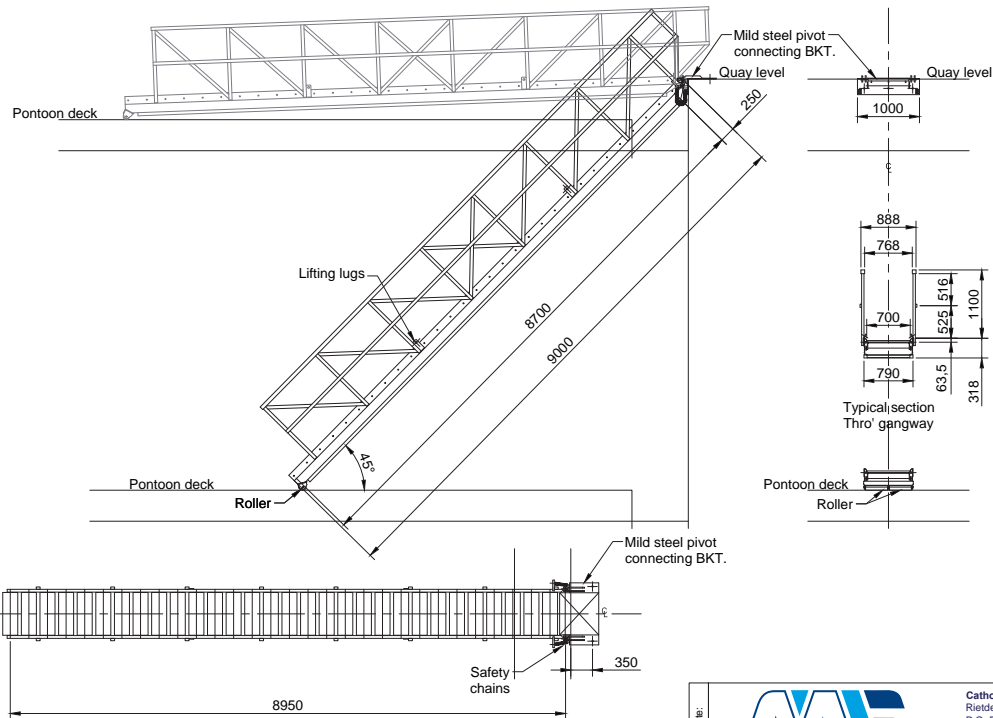
Lightweight aluminium walkway for access to floating pontoons. 0-50 degrees working angle options. Quay roller for variable tide heights.

Standard supply:


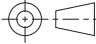
- Manufactured from Marine Grade Lightweight Aluminium 6082 T6
- Clear width to fit customer/gangway requirement
- Anti-slip surface
- Fixed handrail with half-height
- Fixed quay connection
- Quay roller for tidal pontoon movement
- Lifting points for installation

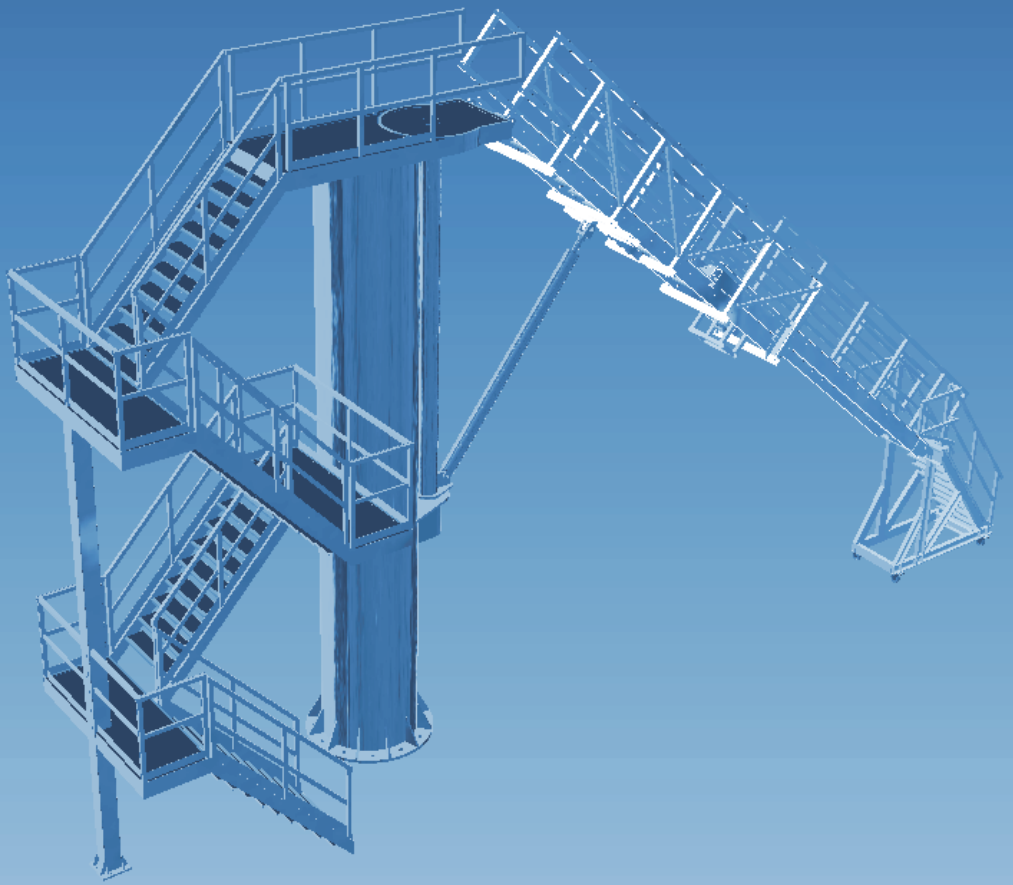
Optional extra's on request:

- Bespoke tower/platform with access steps at fixed end
- Self-levelling treads
- Trolley replacing quay roller
- Disabled access ramps
- Slewing beam
- Lighting, sprinkler system provisions for customer pipework, services, etc.
- Cranked or hinged



- Material**
- Aluminium alloy 6082-T6 (Unless noted otherwise).
- Finish**
- Alu alloy: Self-color, cleaned & degreased.
 - Mild steel: Shotblast to SA2.5, one coat zinc spray & one coat sealer paint (light gray)

Date:			Catholic Protection Division Rieddekerstraat 16 P.O. Box 4222 2980 GE Ridderkerk Netherlands Tel: +31 (0)180 48 28 28 E-mail: sales@mme.nl www.mme-group.com		Projection:  Scale: NTS
			Order number:	Pontoon Access Gangway	
Description:	Drawn: ESM	Date: 31-07-19	Project:	Sheet 1/1	
	Checked: RvW	Date: 23-08-19	Dwg: GA.006-01-B01		
Rev:	Approved: TYNE	Date: 25-09-19	Copyright MME. No part of this drawing may be copied, disclosed, or made public, in any form, without prior written consent of Materiaal Metingen Europe.		



Marine Column & Tower Gangways

Marine Column & Tower Gangways

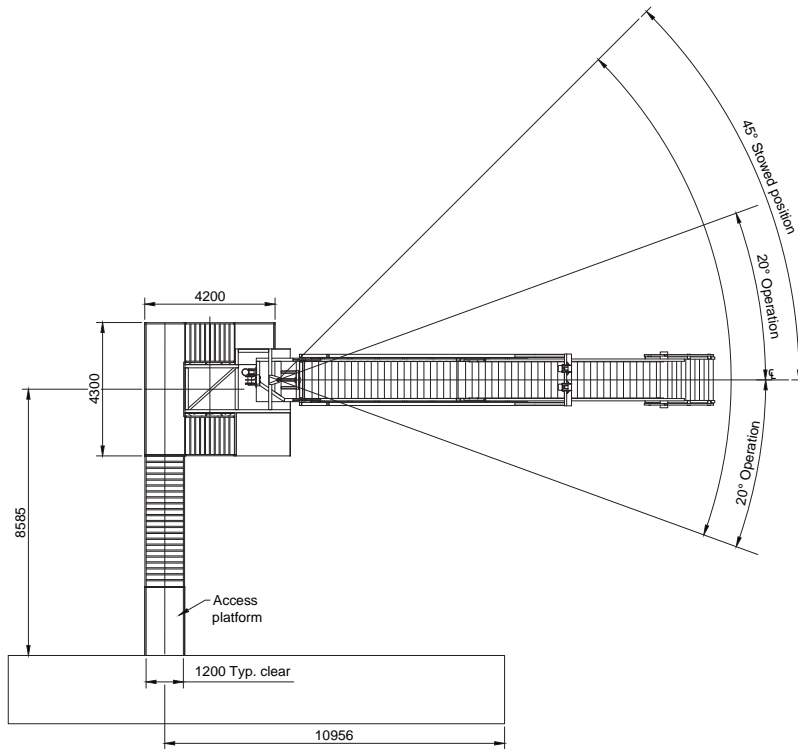
Column and Tower gangways are used when the ship height and range of tidal variation are too great for other gangway types. We engineer the entire system based on the specific situation in which it will be used.

Standard supply:

- Typically manufactured from Marine Grade Lightweight Aluminium 6082 T6
- Telescopic self-levelling gangway
- Anti-slip surface
- Fixed handrail with half-height
- Bulwark ladder for access and egress
- 180° angular rotation
- Lifting points for installation or deployment

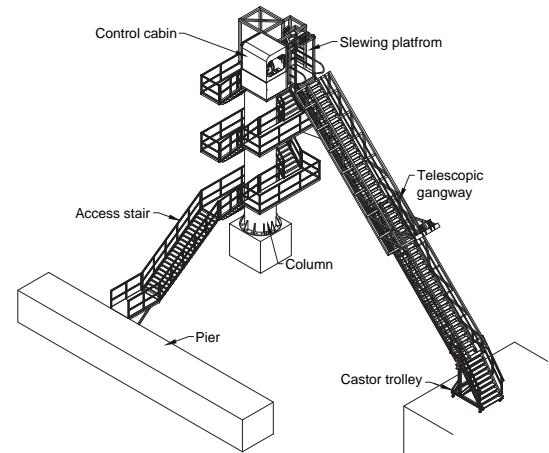
Optional extra's on request:

- Bespoke tower/platform/pedestal with access options to suit customer application
- Customer specific foundation connections
- Hydraulic, electric or crane control options



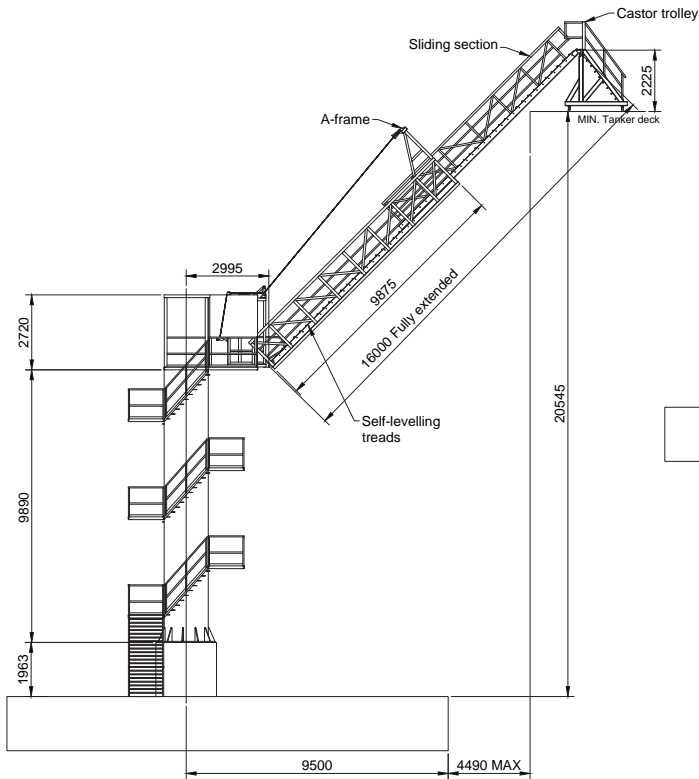
**Plan view of tower
gangway**

Operating angles as shown

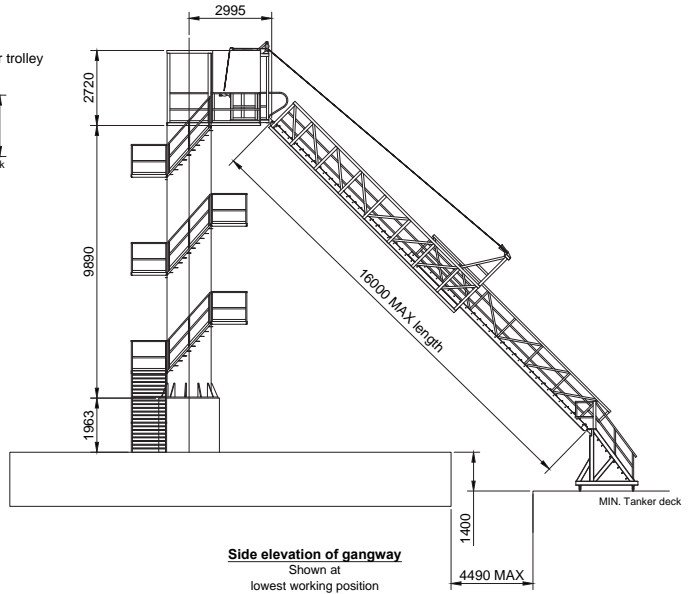


**Isometric view of column
mounted gangway**


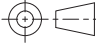
Gangway		Aluminium alloy 6082-T6 (unless noted otherwise)	
Column & Access stair		Mild steel S355 (unless noted otherwise)	
Description		Material	
Date:			Cathodic Protection Division Riedelkerstraat 16 P.O. Box 4222 2980 GE Ridderkerk Netherlands Tel: +31 (0)180 48 28 28 E-mail: sales@mme.nl www.mme-group.com
Order number:		Self-Levelling Column Mounted Gangway	
Description:	Drawn: ESM	Date: 31-07-19	Project:
	Checked: RvW	Date: 23-08-19	Dwg: GA.010-01-B01
Rev:	Approved: TYNE	Date: 25-09-19	Sheet 1/2
Copyright MME. No part of this drawing may be copied, disclosed, or made public, in any form, without prior written consent of Materiaal Metingen Europe.			



Side elevation of gangway
Shown at
highest working position



Side elevation of gangway
Shown at
lowest working position

Date:			Cathodic Protection Division Rieddekerstraat 16 P.O. Box 4222 2980 GE Ridderkerk Netherlands Tel: +31 (0)180 48 28 28 E-mail: sales@mme.nl www.mme-group.com		Projection:  Scale: NTS
			Order number:	Self-Levelling Column Mounted Gangway	
Description:	Drawn: ESM	Date: 31-07-19	Project:	Sheet 2/2	
	Checked: RvW	Date: 23-08-19	Dwg: GA.010-01-B01		
Rev.	Approved: TYNE	Date: 25-09-19	Copyright MME. No part of this drawing may be copied, disclosed, or made public, in any form, without prior written consent of Materiaal Metingen Europe.		



Bespoke Products

Other Bespoke products

Bespoke aluminium marine access equipment to your designs or concepts. Our engineers can create a custom design for any situation based on your requirements.

Contact us for more information.

Projects include:

- Pilot platforms
- Painting stages
- Painting cages
- Counterbalanced paint cradles
- Paint rafts
- Rope pilot ladders
- Mediterranean ladders
- Rung ladders
- Pilot ladders
- Material lifting baskets



Accessories & Spare Parts

Accessoires & spare parts

Every vessel is unique in how and where it operates. Marine boarding equipment is often used in the roughest of conditions. We provide all accessories and spare parts you might need to tailor your boarding equipment to specific operational requirements and replace parts that got damaged.



- **Safety nets:** Safety nets need to be installed where there is a fall risk between the ship & quayside. Safety nets are available in various lengths & widths. Manufactured from machine made knotless 100mm mesh netting compliant with BS EN 1263-1

- **Side nets:** Side nets need to be installed where there is a fall risk from the means of embarkation and disembarkation. Side nets are manufactured from machine made knotless 100mm mesh netting compliant with BS EN 1263-1.



- **Poly rope:** Replacement polypropylene rope.

- **4-Leg lifting slings:** Standard lifting slings for positioning of gangways



More accessories



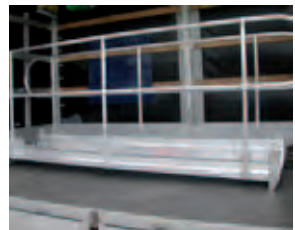
- **Quay rollers:** Aluminum rollers that are installed under the dock end of the gangway to allow it to move on the dock without damaging it

- **Stanchions:** Replacement handrail stanchions



- **Folding handrails:** Reduce the overall storage space of the gangway when not in use. Folding onto the gangway when not in use and with fixed locking when the gangway is deployed. Manufactured from marine grade aluminium bar.

- **Fixed handrails:** Replacing the standard rope & stanchion configuration, rigid handrails are fixed in position on the gangway. Manufactured from marine grade aluminium bar



More accessories



- **Turntable top platform:** Allows the gangway to rotate from the vessel, reducing floor space or landing areas where there is restricted quay access. The Top Platforms can also extend out from the vessel reducing stowage.

- **Self-stowing gear:** Allows a gangway to be retracted and stowed in a minimal window for limited vessel storage space requirements



- **Winches:** Accommodation Ladder Winches (500W, 850W, 1000W, 1500W) & Wormgear Winches (750W)

- **Load tests & certification:** Inspection, class certifications & (third party witnessed) load tests





A Longer Life



Rietdekkerstraat 16
2984 BM Ridderkerk
Postbus 4222
2980 Ridderkerk
The Netherlands

T +31 (0) 180 482 828
F +31 (0) 180 462 241
E info@mme-group.com
I www.mme-group.com